

**INSTRUMENT  
APPROACH  
CHART-ICAO**

**AERODROME ELEV 1208 FT**

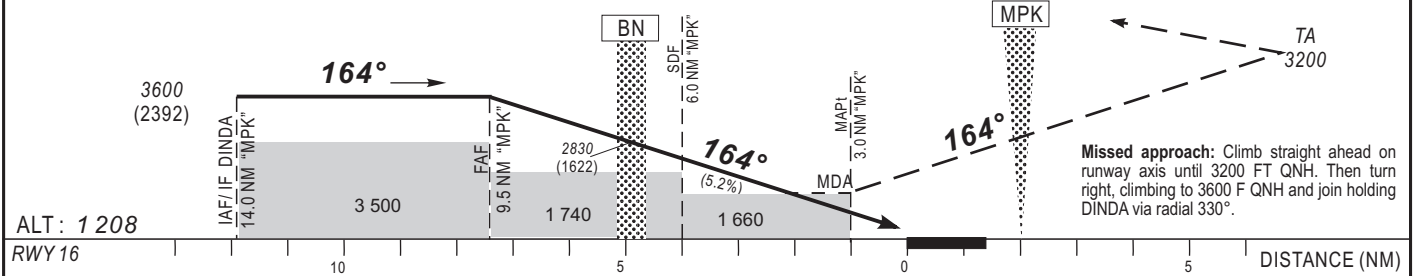
**APP 119.7  
TWR 119.7**

**BANGUI-M'Poko (FEFF)**  
VOR Z RWY 16  
(ACFT CAT A, B, C, D)

HEIGHTS RELATED TO AERODROME ELEV - 1208 FT



Distance to MPK (NM)	FAF	9	8	7	6	5	4	TRANSITION ALTITUDE : 4 200
Altitude (ft)	3600	3500	3180	2860	2540	2220	1900	



CAT	VOR Z				CIRCLING (1)				RVR for Take-off CAT A - B - C : 400 CAT D : 400
	OCA (OCH)	MDA	MDH	RVR	OCA (OCH)	MDA	MDH	VIS	
A	1657 (449)	1660 (450)	1500	1788 (580)	1790 (580)	1500	—	—	Timing: FAF / MAPt 6.5 NM KT / MIN SEC   KT / MIN SEC
B	1657 (449)	1660 (450)	1500	1788 (580)	1790 (580)	1600	—	100   3 Min 54   150   2 Min 36	
C	1657 (449)	1660 (450)	2000	1901 (693)	1910 (700)	2400	—	110   3 Min 33   160   2 Min 26	
D	1657 (449)	1660 (450)	2000	1901 (693)	1910 (700)	3600	—	120   3 Min 15   170   2 Min 18 130   3 Min 00   180   2 Min 10	

**Notes :** (1) OCH and MDH AAL - Circling allowed in the west of the aerodrome - Daytime only

AMDT 12/18 - NORMALIZATION