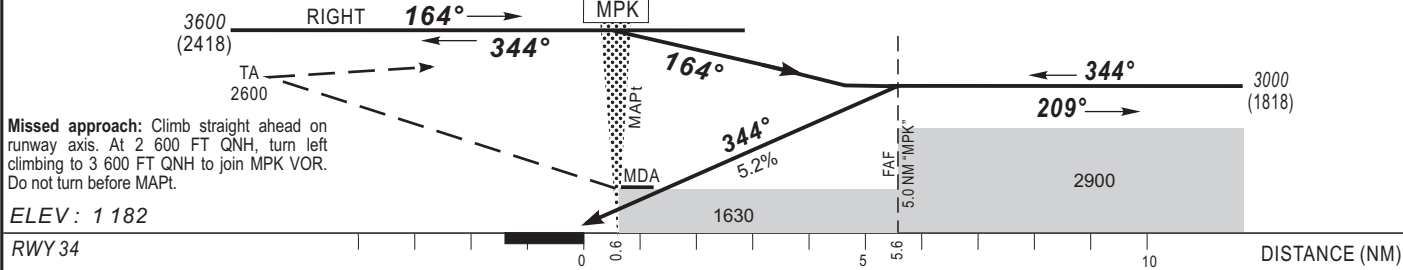


TRANSITION ALTITUDE : 4 200

Distance to MPK (NM)	1	2	3	4	FAF
Altitude (ft)	1740	2060	2380	2700	3000



CAT	VOR Y				CIRCLING (3)				RVR for take-off	
	OCA (OCH)	MDA MDH	RVR(1)	RVR(2)	OCA (OCH)	MDA MDH	VIS	CAT A - B - C	CAT D	
A	1621 (439)	1630 (440)	900	1500	1788 (606)	1790 (610)	1500	400	400	
B	1621 (439)	1630 (440)	1000	1500	1788 (606)	1790 (610)	1600			
C	1621 (439)	1630 (440)	1000	1800	1901 (719)	1910 (720)	2400			
D	1621 (439)	1630 (440)	1400	2000	1901 (719)	1910 (720)	3600			

**Notes :** - (1) With approach lights - (2) Without approach lights  
- (3) OCH and MDH AAL - Circling allowed in the west of the aerodrome - Daytime only

Timing: FAF / MAPt  
5.0 NM

KT	MIN	SEC	KT	MIN	SEC
90	3	20	140	2	09
100	3	00	150	2	00
110	2	44	160	1	52
120	2	30	170	1	46
130	2	18	180	1	40