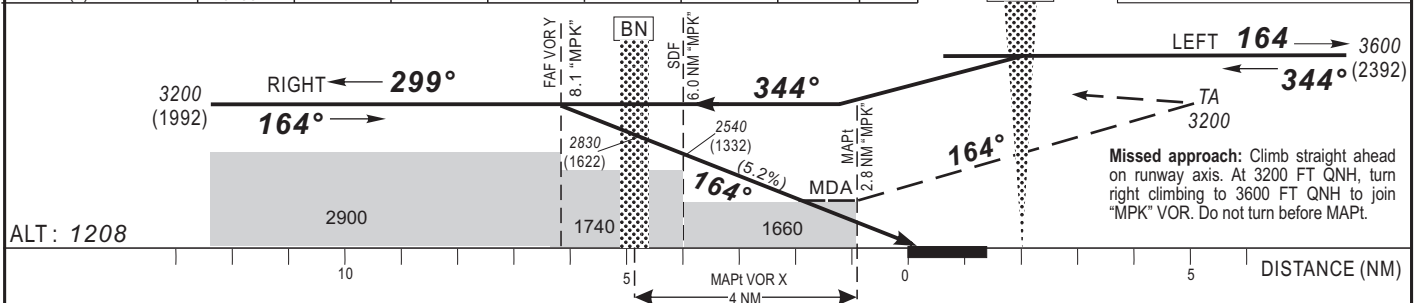


Distance to MPK (NM)	FAF	8	7	6	5	4			
Altitude (ft)	3200	3180	2860	2540	2220	1900			



CAT	VOR Y			VOR X			CIRCLING (1)			RVR for Take-off CATA - B - C : 400 CAT D : 400
	OCA (OCH)	MDA MDH	RVR	OCA (OCH)	MDA MDH	RVR	OCA (OCH)	MDA MDH	VIS	
A	1657 (449)	1660 (450)	1500	1739 (531)	1740 (540)	1500	1788 (580)	1790 (580)	1500	—
B	1657 (449)	1660 (450)	1500	1739 (531)	1740 (540)	1500	1788 (580)	1790 (580)	1600	—
C	1657 (449)	1660 (450)	2000	1739 (531)	1740 (540)	2000	1901 (693)	1910 (700)	2400	—
D	1657 (449)	1660 (450)	2000	1739 (531)	1740 (540)	2000	1901 (693)	1910 (700)	3600	—

Notes: (1) Circling allowed in the west of the aerodrome - Daytime only

Timing: FAF / MAP1		5.3 NM			
KT	MIN	SEC	KT	MIN	SEC
100	3	Min 32	140	2	Min 16
110	2	Min 53	160	1	Min 59
120	2	Min 39	170	1	Min 52
130	2	Min 27	180	1	Min 46

AMDT 12/18: NORMALIZATION