

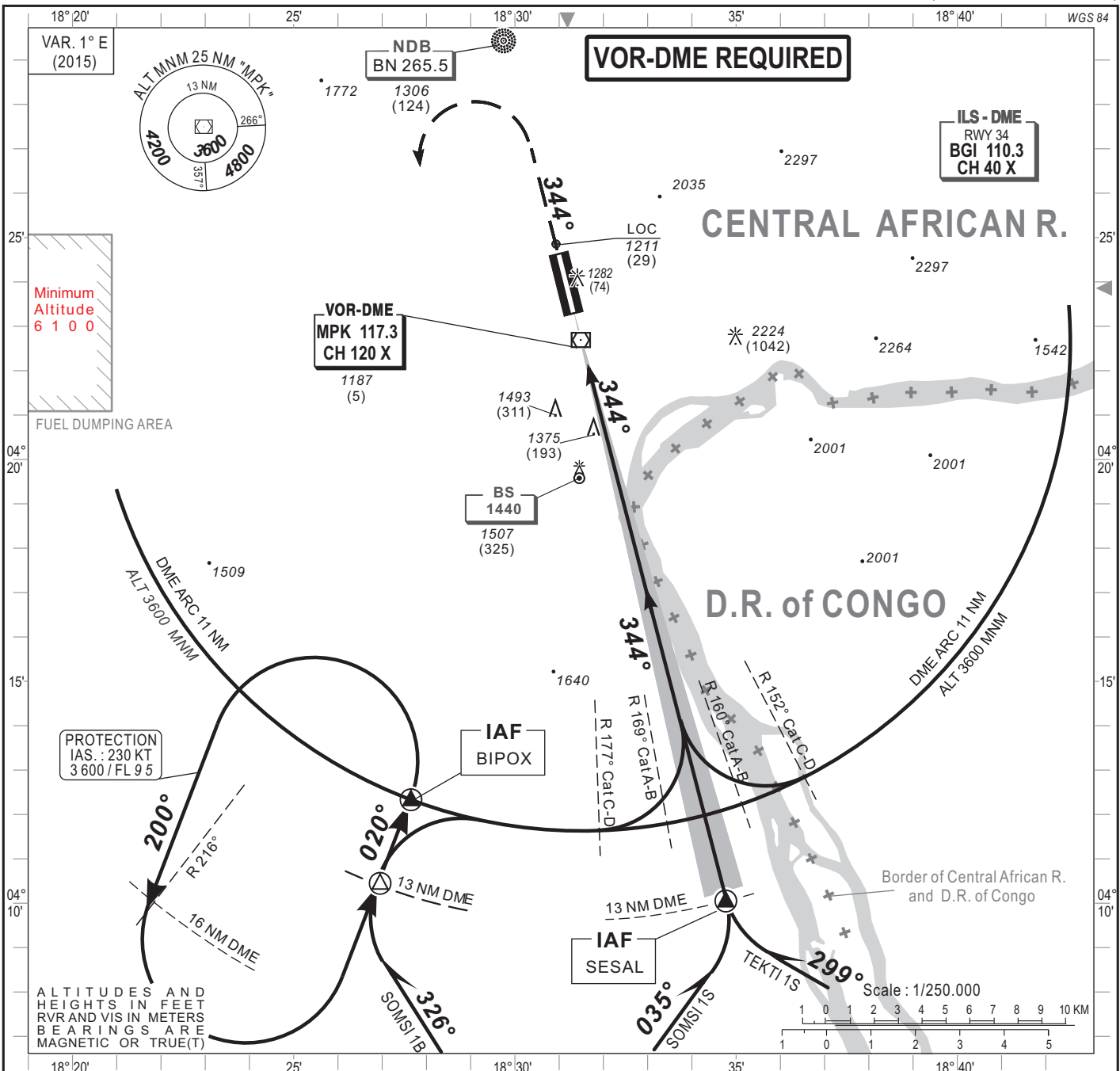
**INSTRUMENT  
APPROACH  
CHART-ICAO**

**AERODROME ELEV 1208 FT**

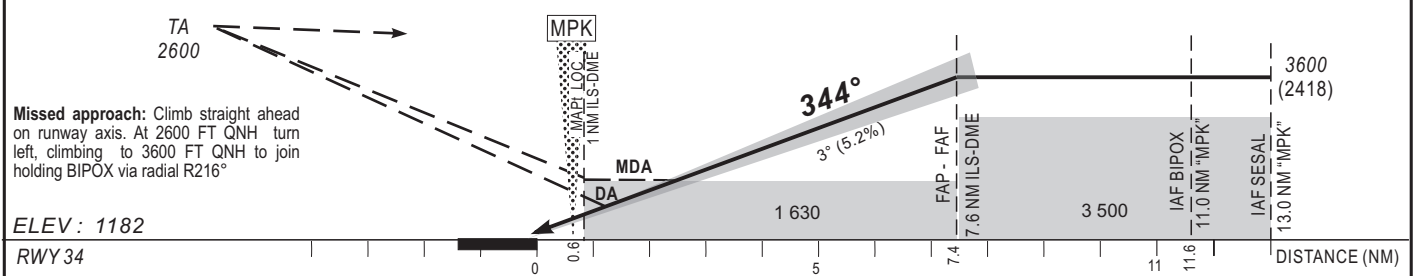
**APP 119.7  
TWR 119.7**

**BANGUI-M'Poko (FEFF)**  
ILS Z or LOC Z RWY 34  
(ACFT CAT A, B, C, D)

HEIGHTS RELATED TO THR RWY 34 - ELEV 1182 FT



Distance to ILS-DME (NM)	FAF	7	6	5	4	3	2	TRANSITION ALTITUDE : 4 200
Altitude (ft)	3 600	3 420	3 100	2 780	2 460	2 140	1 820	



CAT	Cat. 1				LOC				CIRCLING(3)				RVR for Take-off CAT A - B - C : 400 CAT D : 400
	OCA (OCH)	DA	DH	RVR(1)RVR(2)	OCA (OCH)	MDA MDH	RVR(1)RVR(2)	OCA (OCH)	MDA MDH	VIS			
A	1345 (163)	1390 (200)	550	1000	1621 (439)	1630 (440)	900	1500	1788 (606)	1790 (610)	1500	Timing: FAP / THR 7.4 NM	
B	1357 (175)	1390 (200)	550	1000	1621 (439)	1630 (440)	1000	1500	1788 (606)	1790 (610)	1600		
C	1365 (183)	1390 (200)	550	1000	1621 (439)	1630 (440)	1000	1800	1901 (719)	1910 (720)	2400		
D	1376 (194)	1390 (200)	550	1000	1621 (439)	1630 (440)	1400	2000	1901 (719)	1910 (720)	3600		

**Notes** :- (1) With approach lights - (2) Without approach lights  
- (3) OCH and MDH AAL - Circling allowed in the west of the aerodrome - Daytime only  
- RDH : 55m

AMDT 12/18 : NORMALIZATION