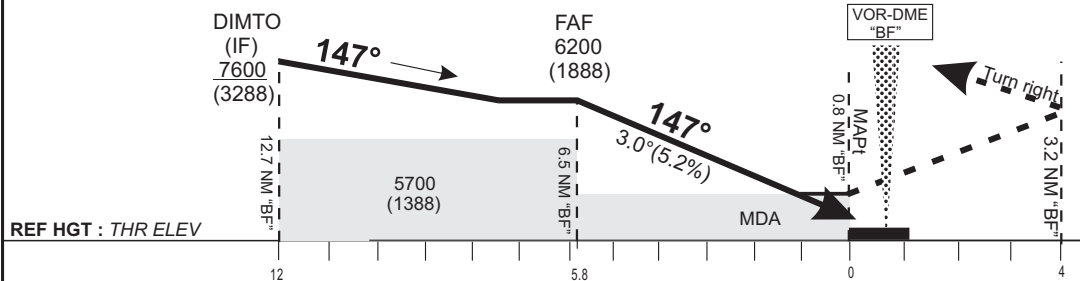


Distance to MAPt (NM)	FAF	5	4	3	2	1
Altitude (ft)	6200	5960	5640	5320	5000	4680

TRANSITION ALTITUDE : 9000



Missed approach:
 Climb on runway axis.
 At 3.2 NM "BF" turn right
 climbing to 7700 ft QNH
 to join Holding
 NATRI via R013° "BF".
 Do not turn before the MAPt

CAT	VOR				Circling (*)				RVR for take-off CATA - B - C : 400
	OCA (OCH)	MDA	MDH	RVR	OCA (OCH)	MDA	MDH	RVR	
A	4905 (593)	4910 (600)	1500	1500	5007 (661)	5010 (670)	1500	1500	Timing: FAF - THR 5.8 NM KT MIN SEC KT MIN SEC 90 3 Min 52 140 2 Min 29 100 3 Min 29 150 2 Min 19 110 3 Min 10 160 2 Min 10 120 2 Min 54 170 130 2 Min 41 180
B	4905 (593)	4910 (600)	1500	1500	5295 (949)	5300 (950)	1600	1600	
C	4905 (593)	4910 (600)	2000	2000	5762 (1416)	5770 (1420)	2400	2400	
	-	-	-	-	-	-	-	-	

Notes :
 - (*) Daytime only - OCH and MDH AAL

CHANGES : First edition