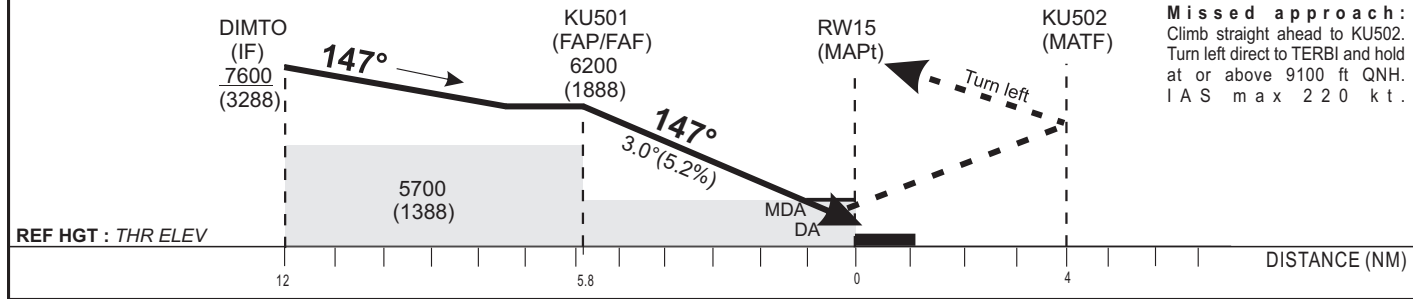


BEARINGS ARE MAGNETIC
 RVR AND VIS ARE IN METERS
 ALTITUDES AND HEIGHTS IN FEET

Distance to THR 15 (NM)	FAP/FAF	5	4	3	2	1	TRANSITION ALTITUDE : 9000
Altitude (ft)	6200	5960	5640	5320	5000	4680	



Missed approach:
 Climb straight ahead to KU502.
 Turn left direct to TERBI and hold
 at or above 9100 ft QNH.
 IAS max 220 kt.

CAT	RNAV/VNAV				RNAV			Circling (*)			RVR for take-off CATA - B - C : 400	
	OCA (OCH)	DA	DH	RVR	OCA (OCH)	MDA	MDH	RVR	OCA (OCH)	MDA		MDH
A	4675 (363)	4680 (370)		1200	4858 (546)	4860 (550)		1500	5007 (661)	5010 (670)		1500
B	4688 (376)	4690 (380)		1200	4858 (546)	4860 (550)		1500	5295 (949)	5300 (950)		1600
C	4709 (397)	4710 (400)		1200	4858 (546)	4860 (550)		2000	5762 (1416)	5770 (1420)		2400

Timing: FAF - THR 5.8 NM					
KT	MIN	SEC	KT	MIN	SEC
90	3	Min 52	140	2	Min 29
100	3	Min 29	150	2	Min 19
110	3	Min 10	160	2	Min 10
120	2	Min 54	170		
130	2	Min 41	180		

Notes:
 - RDH : 15m
 - Minimum temperature: 10°
 - (*) Daytime only - OCH and MDH AAL

CHANGES : First edition