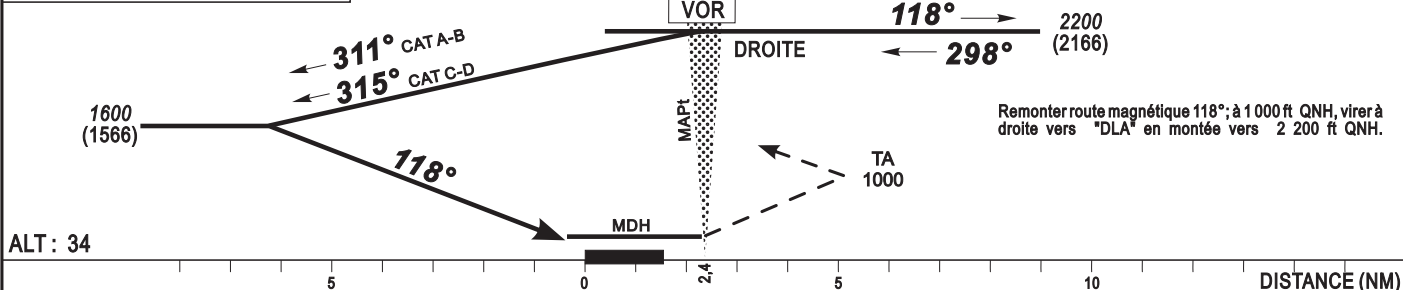


ALTITUDE DE TRANSITION : 2 200



ALT : 34

CAT	VOR			MVL			RVR au décollage			
	OCA (OCH)	MDA (MDH)	RVR	OCA (OCH)	MDA (MDH)	RVR	CATA - B - C: 400 CAT D: 400			
A	631 (597)	640 (600)	1500	631 (597)	640 (600)	1500				
B	631 (597)	640 (600)	1500	631 (597)	640 (600)	1600				
C	631 (597)	640 (600)	2000	730 (696)	730 (700)	2400				
D	631 (597)	640 (600)	2000	730 (696)	730 (700)	3600				

Observations :

Temps					
KT	MIN	SEC	KT	MIN	SEC
90			140		
100			150		
110			160		
120			170		
130			180		

AMDT 12/18 : NORMALISATION