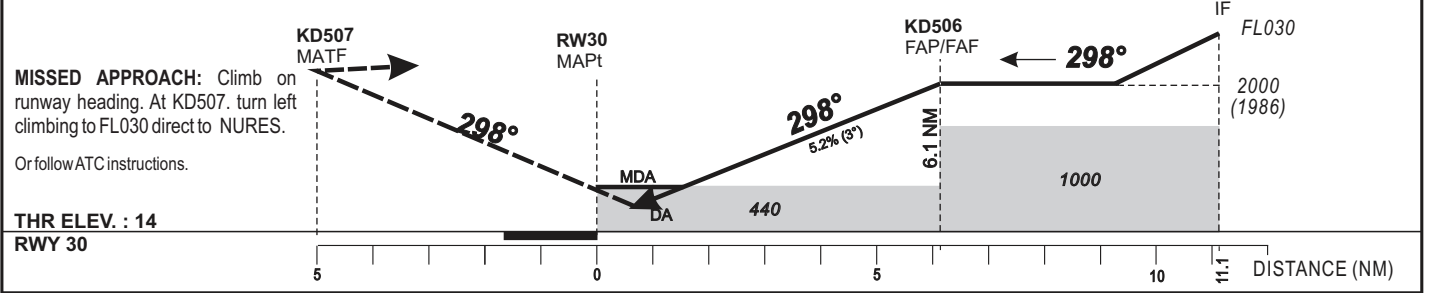


Distance to THR 30 (NM)	FAP/FAF	5	4	3	2
Altitude (ft)	2 000	1 660	1 340	1 020	710

TRANSITION ALTITUDE : 2200



CAT	LNAV				LNAV-VNAV				(*)CIRCLING				RVR for take-off		
	OCA (OCH)	MDA MDH	RVR(1)	RVR(2)	OCA (OCH)	DA DH	RVR(1)	RVR(2)	OCA (OCH)	MDA MDH	VIS	KT	MIN SEC	KT	MIN SEC
A	437 (423)	440 (430)	900	1500	258 (244)	260 (250)	800	1500	653 (619)	660 (620)	1500	90	4 Min 04	140	2 Min 37
B	437 (423)	440 (430)	1000	1500	267 (253)	270 (260)	800	1500	653 (619)	660 (620)	1600	100	3 Min 40	150	2 Min 26
C	437 (423)	440 (430)	1000	1800	277 (263)	280 (270)	800	1600	752 (718)	760 (720)	2400	110	3 Min 20	160	2 Min 17
D	437 (423)	440 (430)	1400	2000	287 (273)	290 (280)	1200	1800	752 (718)	760 (720)	3600	120	3 Min 03	170	2 Min 09
												130	2 Min 49	180	2 Min 02

Observations : - (1) With approach lights - (2) Without approach lights - (*) Daytime only
 - Minimum temperature : 10°C
 - RDH: 50

AMDT 12/18 : NORMALIZATION