

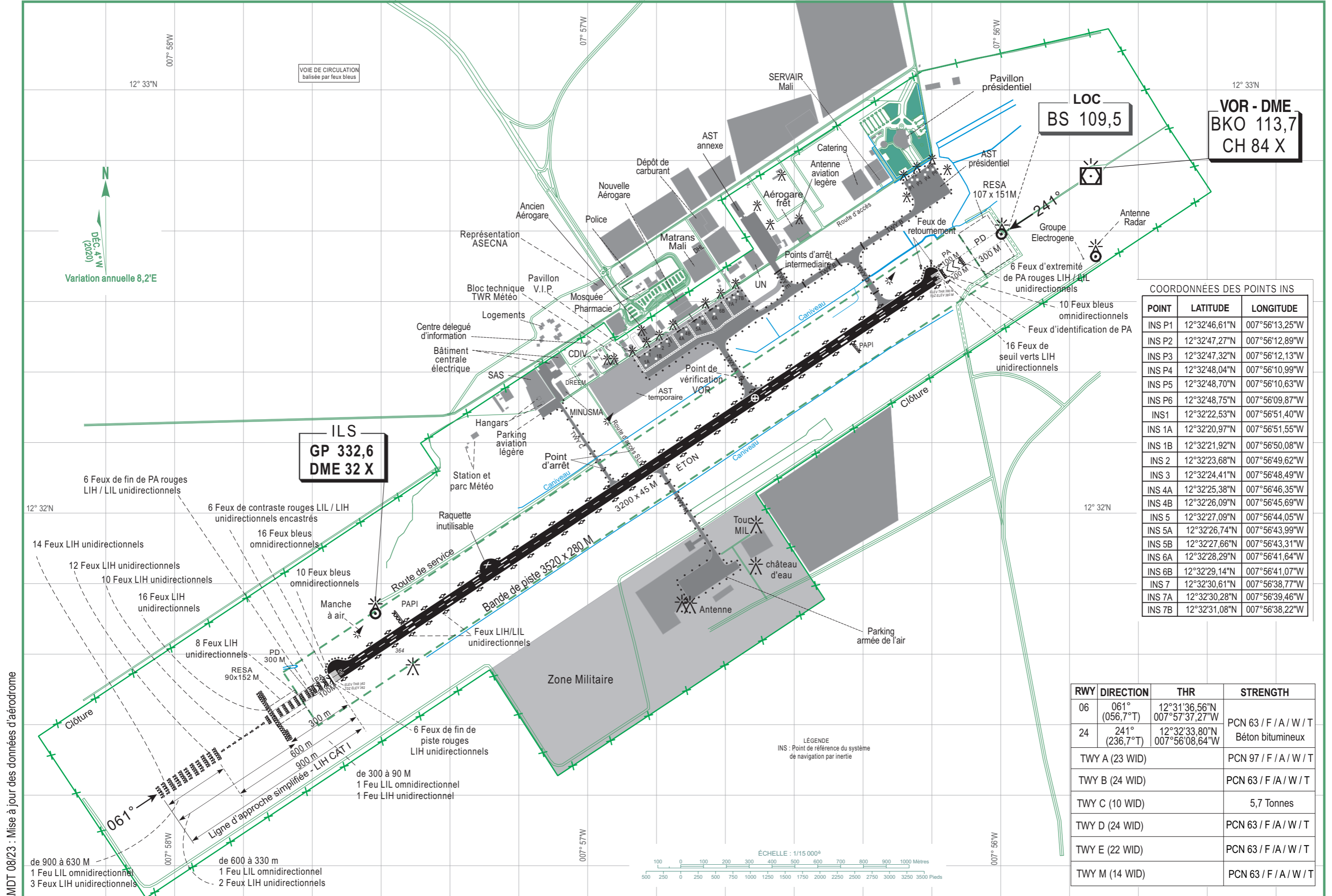
CARTE D'AÉRODROME - OACI

ARP : 12°32'16" N
007°56'36" W

ELEV : 380 m (1248 FT)
GUND : 30,5 m (100 FT)

TWR : BAMAKO TOUR 118,3 MHZ - 125,4 MHZ

Président MODIBO KEITA / SENOU (GABS)



COORDONNÉES DES POINTS INS

POINT	LATITUDE	LONGITUDE
INS P1	12°32'46,61"N	007°56'13,25"W
INS P2	12°32'47,27"N	007°56'12,89"W
INS P3	12°32'47,32"N	007°56'12,13"W
INS P4	12°32'48,04"N	007°56'10,99"W
INS P5	12°32'48,70"N	007°56'10,63"W
INS P6	12°32'48,75"N	007°56'09,87"W
INS1	12°32'22,53"N	007°56'51,40"W
INS 1A	12°32'20,97"N	007°56'51,55"W
INS 1B	12°32'21,92"N	007°56'50,08"W
INS 2	12°32'23,68"N	007°56'49,62"W
INS 3	12°32'24,41"N	007°56'48,49"W
INS 4A	12°32'25,38"N	007°56'46,35"W
INS 4B	12°32'26,09"N	007°56'45,69"W
INS 5	12°32'27,09"N	007°56'44,05"W
INS 5A	12°32'26,74"N	007°56'43,99"W
INS 5B	12°32'27,66"N	007°56'43,31"W
INS 6A	12°32'28,29"N	007°56'41,64"W
INS 6B	12°32'29,14"N	007°56'41,07"W
INS 7	12°32'30,61"N	007°56'38,77"W
INS 7A	12°32'30,28"N	007°56'39,46"W
INS 7B	12°32'31,08"N	007°56'38,22"W

RWY	DIRECTION	THR	STRENGTH
06	061° (056,7°T)	12°31'36,56"N 007°57'37,27"W	PCN 63 / F / A / W / T
24	241° (236,7°T)	12°32'33,80"N 007°56'08,64"W	Béton bitumineux
TWY A (23 WID)			PCN 97 / F / A / W / T
TWY B (24 WID)			PCN 63 / F / A / W / T
TWY C (10 WID)			5,7 Tonnes
TWY D (24 WID)			PCN 63 / F / A / W / T
TWY E (22 WID)			PCN 63 / F / A / W / T
TWY M (14 WID)			PCN 63 / F / A / W / T

AMDT 08/23 : Mise à jour des données d'aérodrome