



ATC SURVEILLANCE MINIMUM ALTI T U D E C H A R T

AERODROME ELEV. : 4 198
TRANSITION ALT. : 8 000

Approach : 125.7
Tower : 120.1

ANTANANARIVO / Ivato (FMMI)

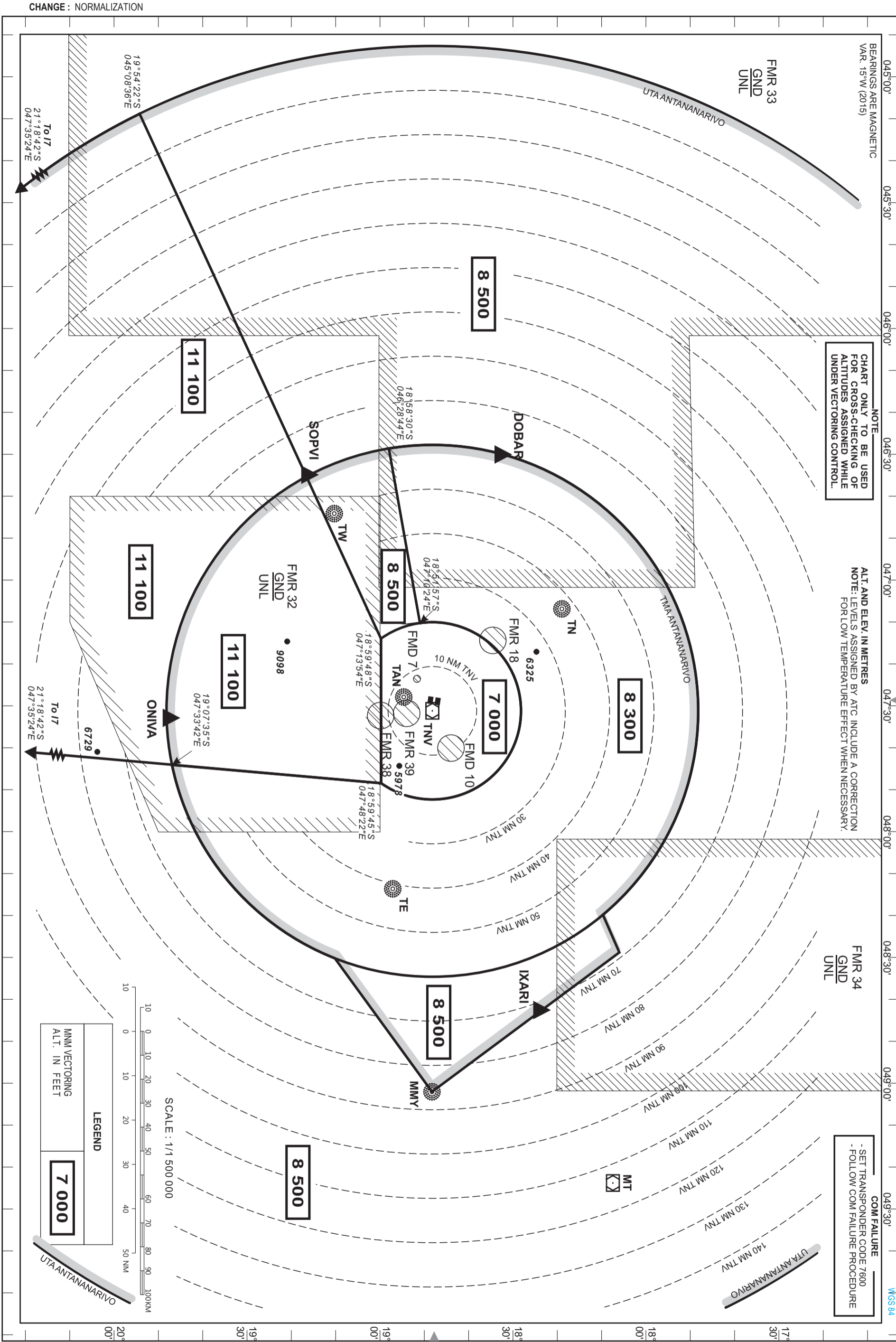
WGS 84

BEARINGS ARE MAGNETIC
VAR. 15°W (2015)

NOTE
CHART ONLY TO BE USED
FOR CROSS-CHECKING OF
ALTITUDES ASSIGNED WHILE
UNDER VECTORING CONTROL.

ALT. AND ELEV. IN METRES
NOTE: LEVELS ASSIGNED BY ATC INCLUDE A CORRECTION
FOR LOW TEMPERATURE EFFECT WHEN NECESSARY.

COM FAILURE
- SET TRANSPONDER CODE 7600
- FOLLOW COM FAILURE PROCEDURE



CHANGE : NORMALIZATION