

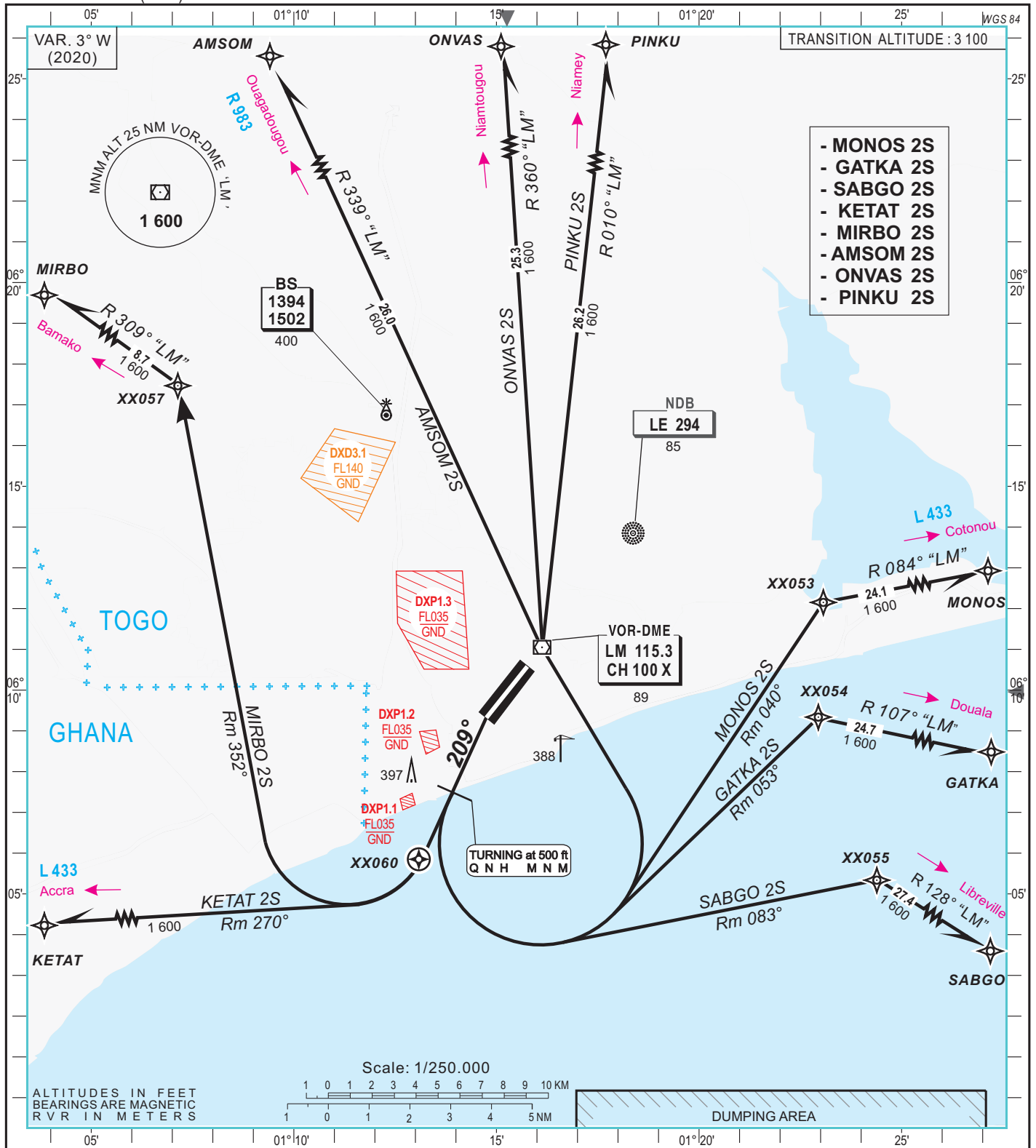
STANDARD
DEPARTURES CHART
INSTRUMENT (SID)

APP : Cotonou Approach 125.9
TWR : Lomé Tower 120.7

LOME /Gnassingbé EYADEMA (DXXX)

AERODROME ELEV: 72

RWY 22



- MONOS 2S
- GATKA 2S
- SABGO 2S
- KETAT 2S
- MIRBO 2S
- AMSOM 2S
- ONVAS 2S
- PINKU 2S

Notes :
 - Departure to KETAT and MIRBO :
 Climb on track 209° till XX060. Turn right climbing to KETAT or MIRBO.
 - Departure to SABGO, GATKA and MONOS :
 Climb on track 209° till passing 500 ft. Turn left and follow the appropriate standard instrument departure.
 - Departure to PINKU, ONVAS and AMSOM :
 Climb on track 209° till passing 500ft. Turn left to VOR "LM" overhead and follow the appropriate standard instrument departure.

RVR for take-off :
 CAT. A - B - C - D : 400

WPTS	COORDINATES	QDR/D LM
XX053	06°12'09.1"N-001°23'04.0"E	084°/7.0 NM
XX054	06°09'20.2"N-001°22'56.6"E	107°/7.0 NM
XX055	06°05'20.2"N-001°24'23.3"E	128°/10.0 NM
XX057	06°17'28.1"N-001°07'08.2"E	309°/11.0 NM
XX060	06°05'50.5"N-001°13'05.0"E	213°/6.0 NM

WPTS	COORDINATES	QDR/D LM
SABGO	05°49'41.0"N-001°47'00.0"E	128°/37.4 NM
GATKA	06°03'18.0"N-001°47'00.0"E	107°/31.7 NM
MONOS	06°15'57.0"N-001°47'00.0"E	084°/31.1 NM
PINKU	06°37'09.29"N-001°19'25.07"E	010°/26.2 NM
ONVAS	06°36'24.46"N-001°14'48.69"E	360°/25.3 NM
AMSOM	06°34'54.0"N-001°05'32.0"E	339°/26.0 NM
MIRBO	06°22'33.7"N-001°00'00.0"E	309°/19.7 NM
KETAT	06°04'03.0"N-001°00'00.0"E	250°/17.5 NM

CHANGE: NEW EDITION