

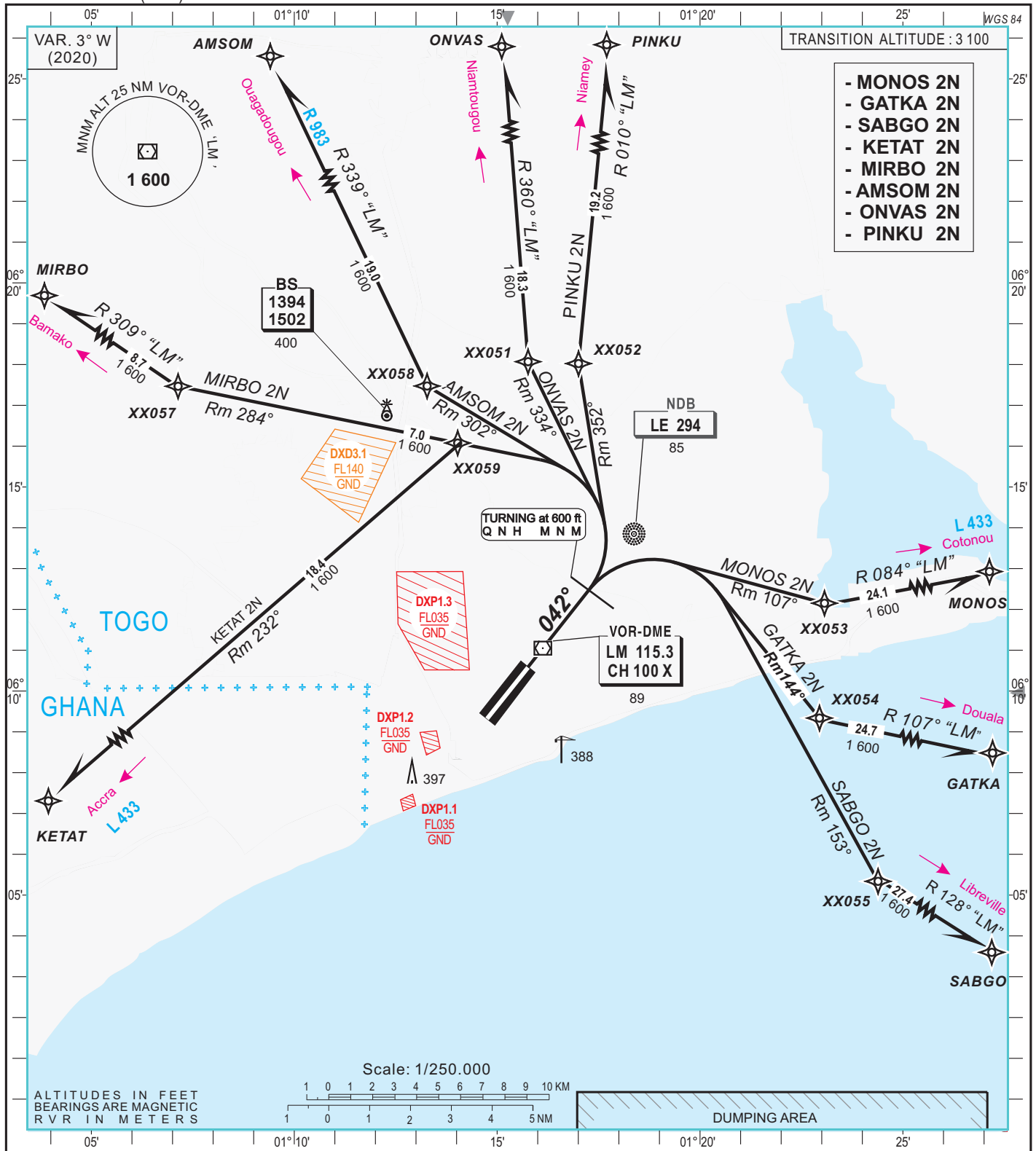
STANDARD
DEPARTURES CHART
INSTRUMENT (SID)

AERODROME ELEV: 72

APP : Cotonou Approach 125.9
TWR : Lomé Tower 120.7

LOME /Gnassingbé EYADÉMA (DXXX)

RWY 04



- MONOS 2N
- GATKA 2N
- SABGO 2N
- KETAT 2N
- MIRBO 2N
- AMSOM 2N
- ONVAS 2N
- PINKU 2N

Notes :

Departure to PINKU, ONVAS, AMSOM, MIRBO and KETAT

Climb on track 042° till passing 600 ft. Turn left and follow the appropriate standard instrument departure.

Departure to MONOS, GATKA and SABGO :
Climb on track 042° till passing 600 ft. Turn right and follow the appropriate standard instrument departure.

RVR for take-off :
CAT. A - B - C - D : 400

WPTS	COORDINATES	QDR/D LM	WPTS	COORDINATES	QDR/D LM
XX051	06°18'04.2"N-001°15'45.7"E	360°/7.0 NM	SABGO	05°49'41.0"N-001°47'00.0"E	128°/37.4 NM
XX052	06°18'01.4"N-001°17'00.3"E	010°/7.0 NM	GATKA	06°03'18.0"N-001°47'00.0"E	107°/31.7 NM
XX053	06°12'09.1"N-001°23'04.0"E	084°/7.0 NM	MONOS	06°15'57.0"N-001°47'00.0"E	084°/31.1 NM
XX054	06°09'20.2"N-001°22'56.6"E	107°/7.0 NM	PINKU	06°37'09.29"N-001°19'25.07"E	010°/26.2 NM
XX055	06°05'20.2"N-001°24'23.3"E	128°/10.0 NM	ONVAS	06°36'24.46"N-001°14'48.69"E	360°/25.3 NM
XX057	06°17'28.1"N-001°07'08.2"E	309°/11.0 NM	AMSOM	06°34'54.0"N-001°05'32.0"E	339°/26.0 NM
XX058	06°17'28.4"N-001°13'16.4"E	339°/7.0 NM	MIRBO	06°22'33.7"N-001°00'00.0"E	309°/19.7 NM
XX059	06°16'04.6"N-001°14'01.6"E	340°/5.4 NM	KETAT	06°04'03.0"N-001°00'00.0"E	250°/17.5 NM

CHANGE: NEW EDITION