

**INSTRUMENT APPROACH CHART**

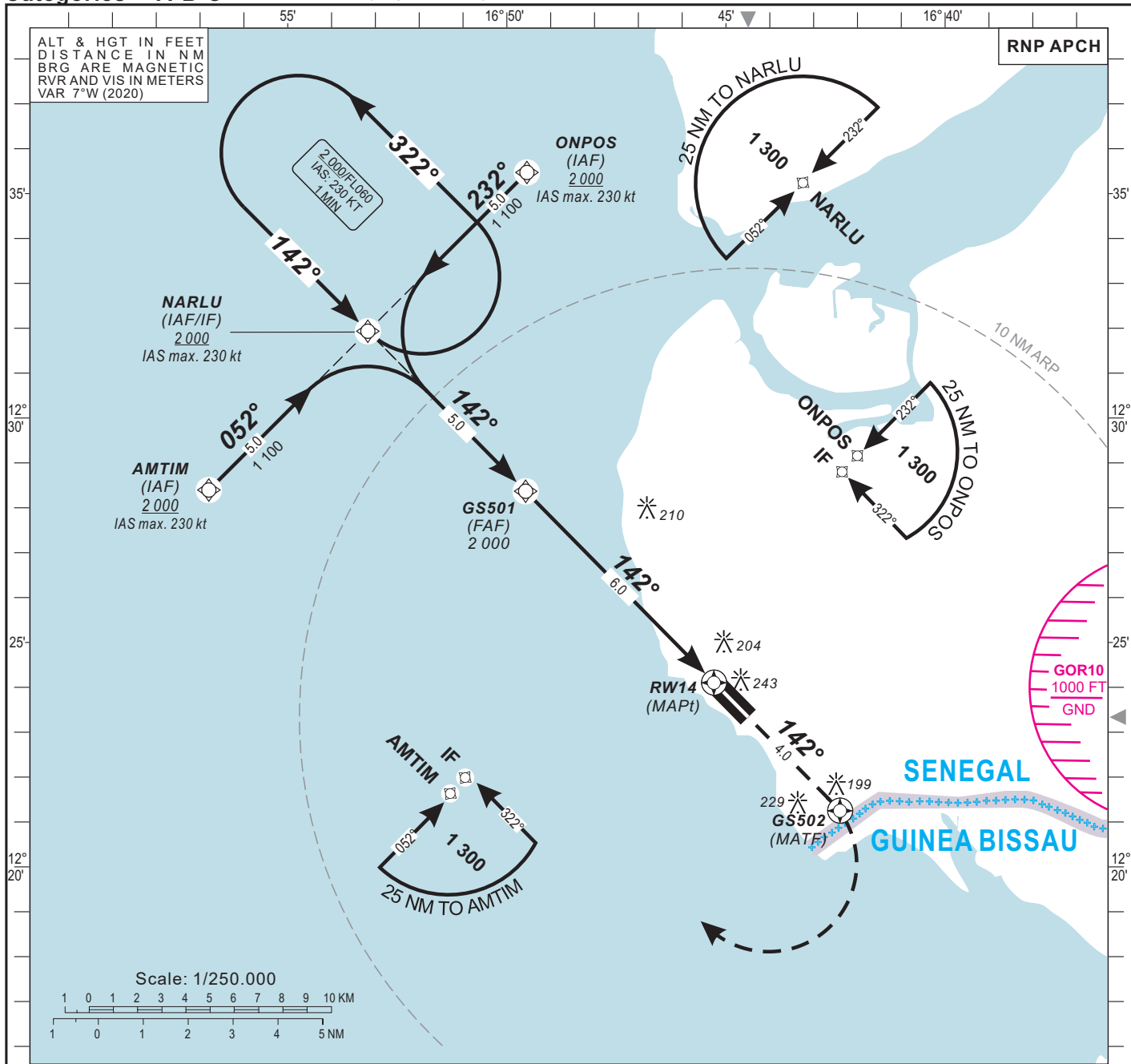
AERODROME ELEV: 55  
 THR RWY 14 ELEV: 48  
 HEIGHTS RELATED TO THR RWY 14 ELEV

TWR : Cap Skirring TWR 118.9  
 APP : Cap Skirring TWR 118.9

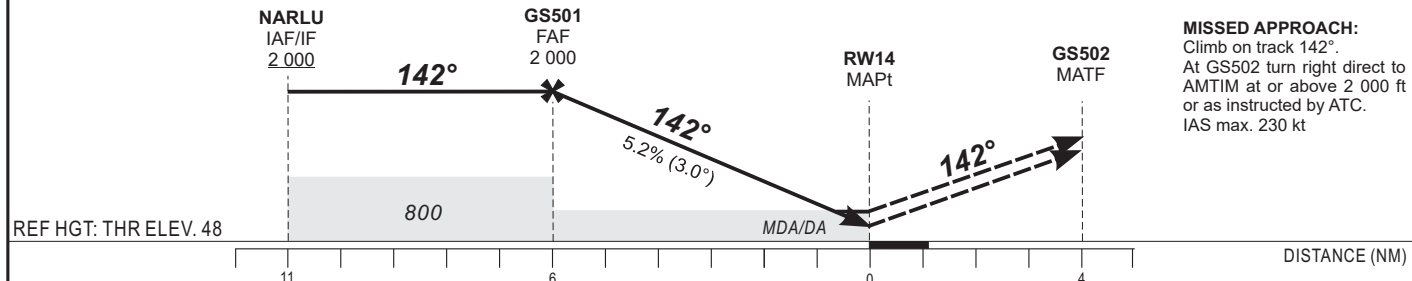
**CAP SKIRRING (GOGS)**

Categories **A-B-C**

**RNP RWY 14**



TRANSITION ALTITUDE: 3 100	FAF	5	4	3	2	1	TO RW14 (NM)
	2 000	1 680	1 360	1 050	730	410	ALTITUDE (FT)



CAT	LNAV/VNAV				LNAV				CIRCLING (1)				RVR for take-off CAT. A-B-C : 400 m	
	OCA (OCH)	DA	DH	RVR	OCA (OCH)	MDA	MDH	RVR	OCA (OCH)	MDA	MDH	VIS	KT	MIN SEC
A	373 (325)	380 (330)	1200	-	489 (441)	490 (450)	1500	-	539 (484)	540 (490)	1500			
B	385 (337)	390 (340)	1200	-	489 (441)	490 (450)	1500	-	547 (492)	550 (500)	1600			
C	394 (346)	400 (350)	1200	-	489 (441)	490 (450)	1500	-	646 (591)	650 (600)	2400			
D	-	-	-	-	-	-	-	-	-	-	-			

**Notes:** - (1) Daytime only. OCH and MDH AAL.  
 - RDH : 15 m  
 - Minimum temperature : 10 °C