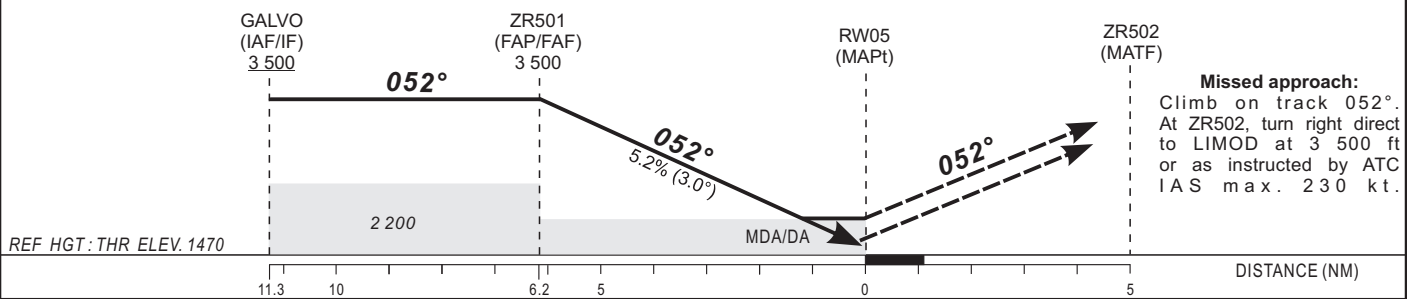


Distance to THR 05 (NM)	FAF	6	5	4	3	2	RW05	TRANSITION ALTITUDE : 5 000
Altitude (ft)	3 500	3 430	3 115	2 800	2 480	2 160		



CAT	LNAV/VNAV				LNAV				CIRCLING (3)			RVR for take-off: CAT A - B - C : 400			
	OCA (OCH)	DA (DH)	RVR(1)	RVR(2)	OCA (OCH)	MDA (MDH)	RVR(1)	RVR(2)	OCA (OCH)	MDA (MDH)	VIS	KT	MIN SEC	KT	MIN SEC
A	1735 (265)	1740 (270)	900	1200	1920 (450)	1920 (450)	1500	1500	2052 (546)	2060 (550)	1500	100	4 Min 08	140	2 Min 39
B	1747 (277)	1750 (280)	900	1200	1920 (450)	1920 (450)	1500	1500	2052 (546)	2060 (550)	1600	110	3 Min 43	150	2 Min 29
C	1759 (289)	1760 (290)	900	1200	1920 (450)	1920 (450)	1800	2000	2156 (650)	2160 (650)	2400	120	3 Min 06	170	
D	-	-	-	-	-	-	-	-	-	-	-	130	2 Min 52	180	

**Notes:**  
 - (1) With approach lights - (2) Without approach lights - RDH: 15 m  
 - (3) Daytime only. OCH and MDH AAL - Minimum temperature : 10° C

AMDT 03/22 : Second edition