

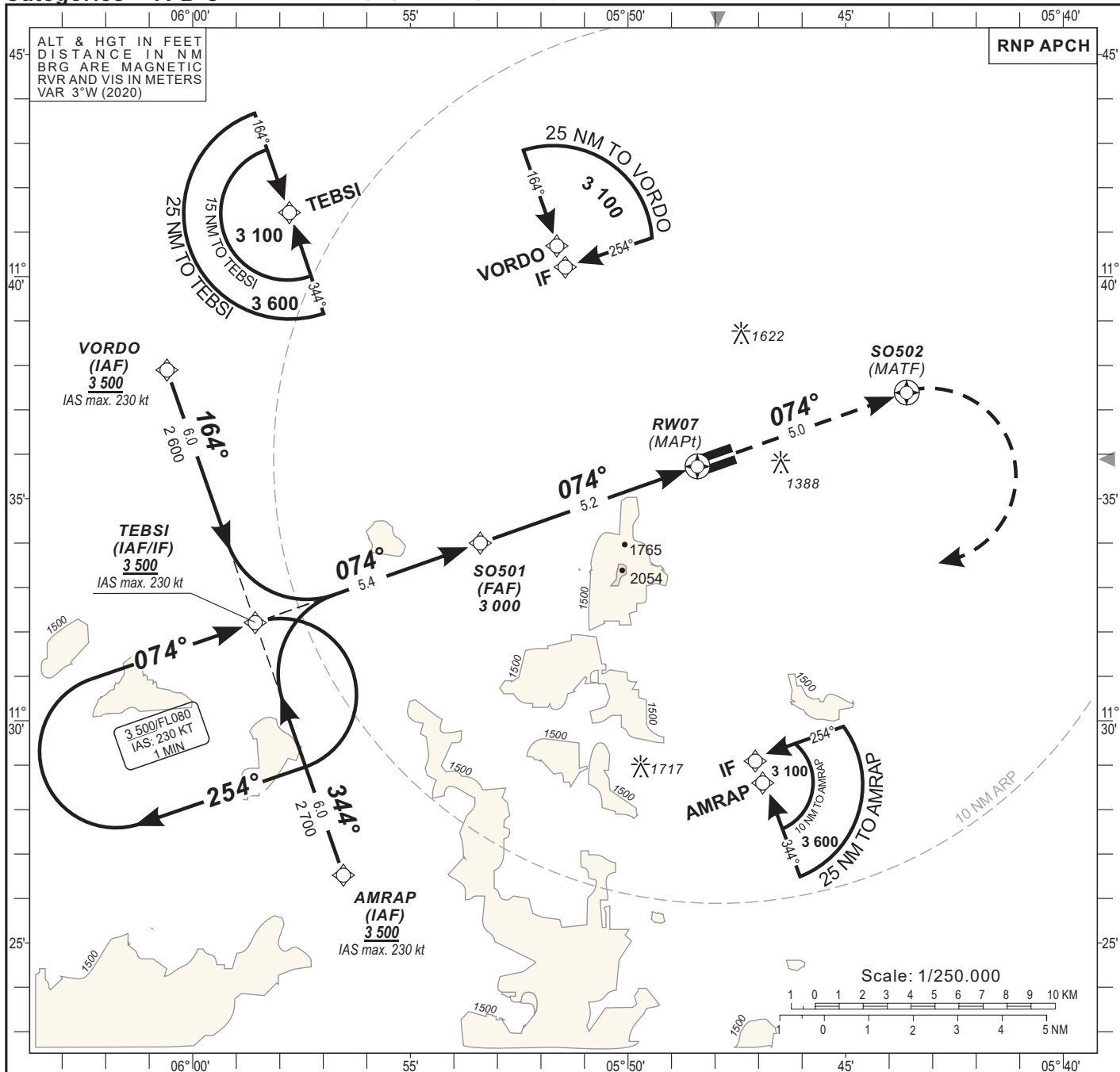
**INSTRUMENT APPROACH CHART**

AERODROME ELEV: 1302  
 THR RWY 07 ELEV: 1297  
 HEIGHTS RELATED TO THR RWY 07 ELEV

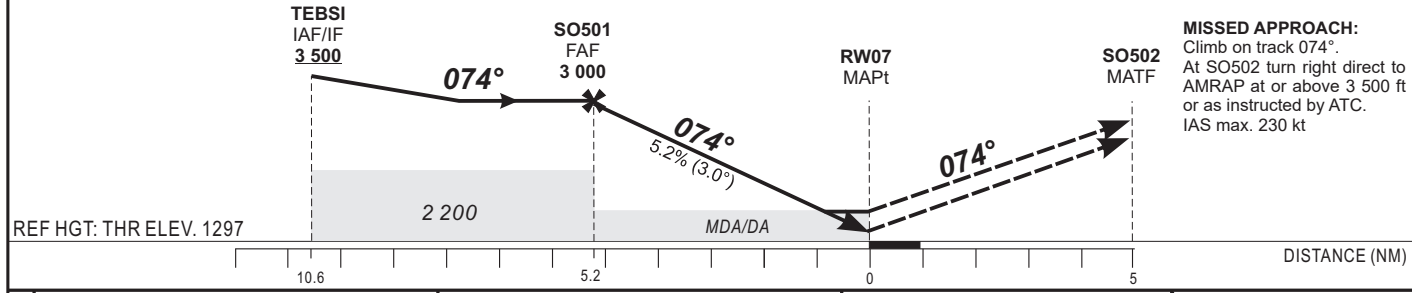
AFIS : Sikasso 118.1

RNP RWY 07

Categories **A-B-C**



TRANSITION ALTITUDE: 4 500	FAF	5	4	3	2	TO RWY07 (NM)
	3 000	2 940	2 620	2 300	1 985	ALTITUDE (FT)



CAT	LNAV/VNAV				LNAV				CIRCLING <b>3</b>				Timing	FAF / THR 5.2 NM		
	OCA (OCH)	DA	DH	RVR <b>1</b>	RVR <b>2</b>	OCA (OCH)	MDA	MDH	RVR <b>1</b>	RVR <b>2</b>	OCA (OCH)	MDA			MDH	VIS
A	1817 (520)	1820 (520)	900	900	1200	1939 (642)	1940 (650)	1500	1500	1949 (647)	1950 (650)	1500	90	3 Min 28	140	2 Min 14
B	1829 (532)	1830 (540)	900	900	1200	1939 (642)	1940 (650)	1500	1500	2373 (1071)	2380 (1080)	1600	100	3 Min 07	150	2 Min 05
C	1837 (540)	1840 (540)	900	900	1200	1939 (642)	1940 (650)	1800	2000	2497 (1195)	2500 (1200)	2400	110	2 Min 50	160	1 Min 57
D	-	-	-	-	-	-	-	-	-	-	-	-	120	2 Min 36	170	-
													130	2 Min 24	180	-

Notes: **1** With approach lights  
**2** Without approach lights  
**3** Daytime only. OCH and MDH AAL

- Minimum temperature : 10° C  
 - RDH: 15 m