

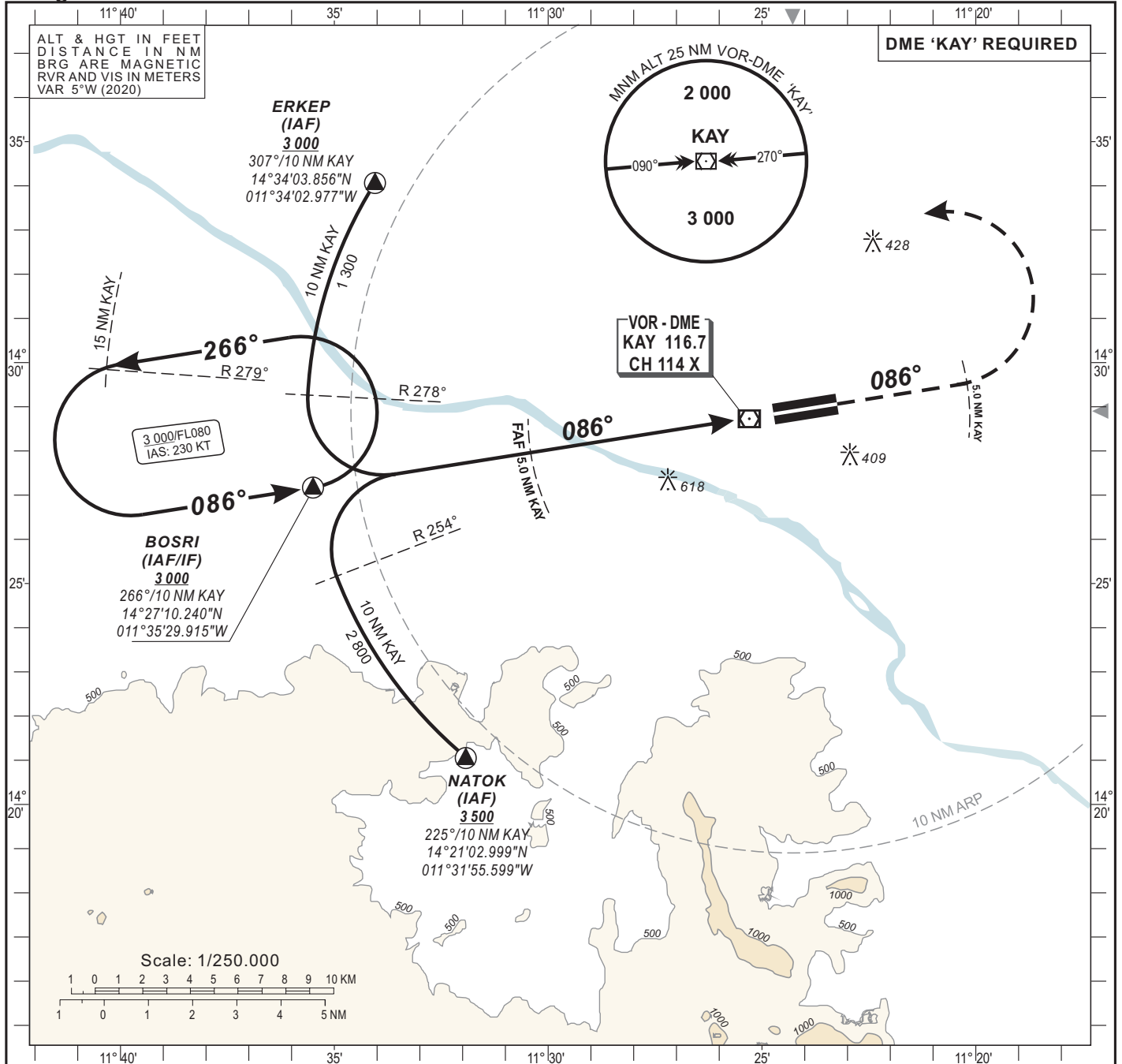
INSTRUMENT APPROACH CHART
Categories A-B-C-D

AERODROME ELEV: 168
THR RWY 09 ELEV: 158
HEIGHTS RELATED TO THR RWY 09 ELEV

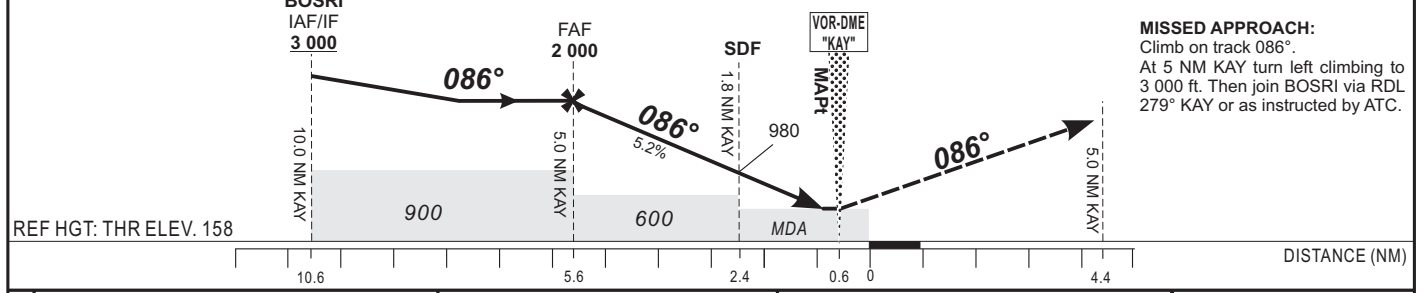
KAYES Dag-Dag (GAKD) VOR RWY 09

TWR : Kayes 118.1

IDENT VOR « KAY » FREQ 116.7



| | | | | | | |
|----------------------------|-------|-------|-------|-------|-----|----------------|
| TRANSITION ALTITUDE: 4 500 | FAF | 4 | 3 | 2 | 1 | TO DME KAY(NM) |
| | 2 000 | 1 675 | 1 355 | 1 035 | 720 | ALTITUDE (FT) |



| CAT | VOR-DME | | | | CIRCLING | | | | Timing | FAF / THR | | |
|-----|-----------|-----------|-------|-------|------------|------------|------|--------|--------|-----------|---------|----------|
| | OCA (OCH) | MDA MDH | RVR 1 | RVR 2 | OCA (OCH) | MDA MDH | VIS | 5.6 NM | | KT | MIN SEC | |
| A | 519 (361) | 520 (370) | 1200 | 1500 | 704 (536) | 710 (540) | 1500 | | 90 | 3 Min 44 | 140 | 2 Min 24 |
| B | 519 (361) | 520 (370) | 1300 | 1500 | 704 (536) | 710 (540) | 1600 | | 100 | 3 Min 22 | 150 | 2 Min 14 |
| C | 519 (361) | 520 (370) | 1400 | 1800 | 1012 (844) | 1020 (850) | 2400 | | 110 | 3 Min 03 | 160 | 2 Min 06 |
| D | 519 (361) | 520 (370) | 1600 | 2000 | 1012 (844) | 1020 (850) | 3600 | | 120 | 2 Min 48 | 170 | 1 Min 59 |
| | | | | | | | | | 130 | 2 Min 35 | 180 | 1 Min 52 |

Notes:
 1 With approach lights
 2 Without approach lights
 3 Daytime only. OCH and MDH AAL