

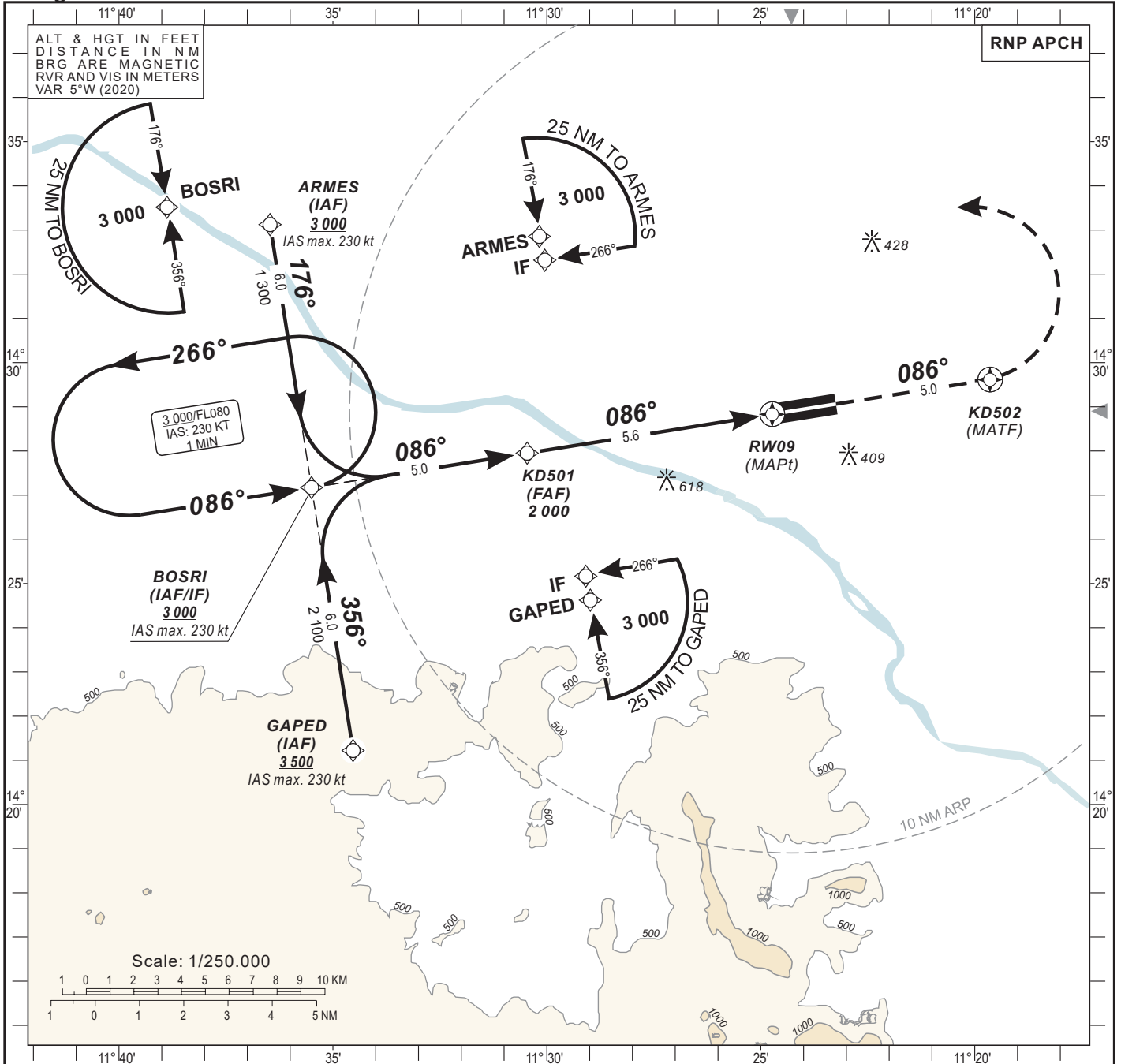
INSTRUMENT APPROACH CHART
Categories A-B-C-D

AERODROME ELEV: 168
THR RWY 09 ELEV: 158
HEIGHTS RELATED TO THR RWY 09 ELEV

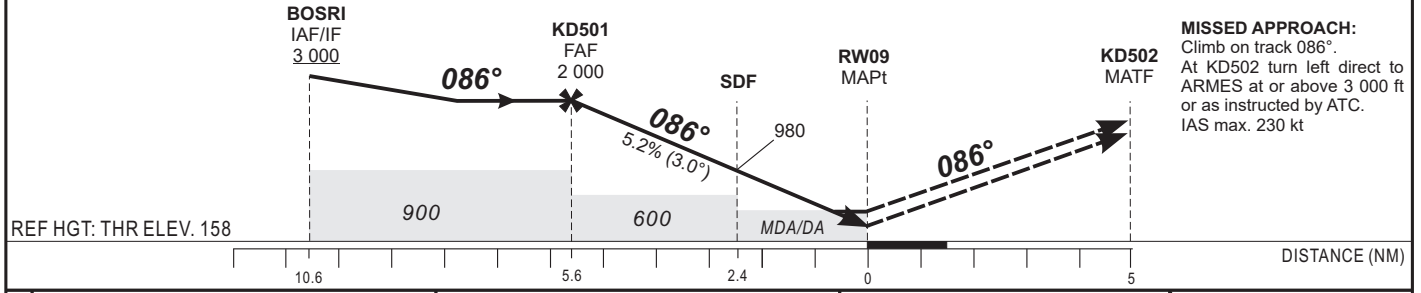
TWR : Kayes 118.1

KAYES / Dag-Dag (GAKD)

RNP RWY 09



TRANSITION ALTITUDE: 4 500	FAF	5	4	3	2	1	TO RW09 (NM)
	2 000	1 800	1 480	1 165	845	525	ALTITUDE (FT)



CAT	LNAV/VNAV				LNAV				CIRCLING 3				Timing	FAF / THR 5.6 NM		
	OCA (OCH)	DA	DH	RVR ¹	RVR ²	OCA (OCH)	MDA	MDH	RVR ¹	RVR ²	OCA (OCH)	MDA			MDH	VIS
A	375 (217)	410 (250)	700	700	1000	505 (347)	510 (350)	1200	1500	704 (536)	710 (540)	1500	90	3 Min 44	140	2 Min 24
B	387 (229)	410 (250)	800	800	1200	505 (347)	510 (350)	1300	1500	704 (536)	710 (540)	1600	100	3 Min 22	150	2 Min 14
C	407 (249)	410 (250)	800	800	1200	505 (347)	510 (350)	1400	1800	1012 (844)	1020 (850)	2400	110	3 Min 03	160	2 Min 06
D	433 (275)	440 (280)	800	800	1200	505 (347)	510 (350)	1600	2000	1012 (844)	1020 (850)	3600	120	2 Min 48	170	1 Min 59
													130	2 Min 35	180	1 Min 52

Notes:

- 1** With approach lights
- 2** Without approach lights
- 3** Daytime only. OCH and MDH AAL

- Minimum temperature : 10° C
- RDH: 15 m