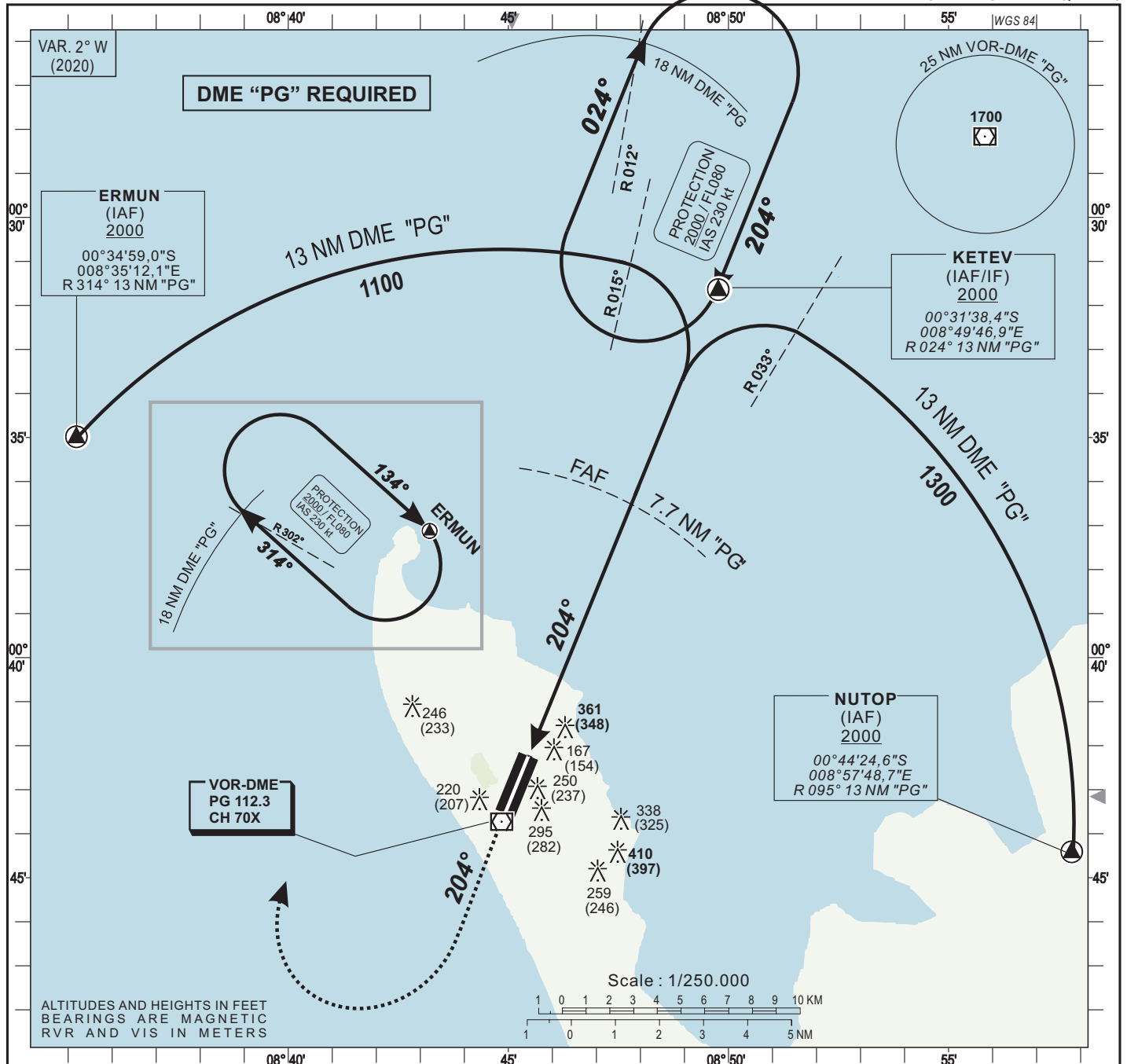


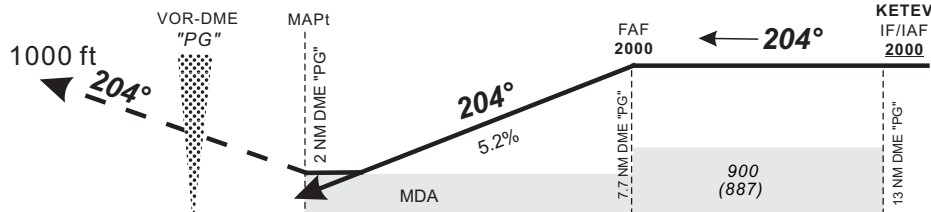
HEIGHTS RELATED TO AERODROME ELEVATION



Distance to DME « PG » (NM)	RWY 20	4	5	6	7	FAF
Altitude (ft)		830	1145	1465	1780	2000

TRANSITION ALTITUDE : 3 100

Missed approach: Climb up to 1000 ft on R 204, then turn right climbing to 2000 ft, join KETEV via R012 or as instructed by ATC. Do not turn before MAPt.



MDA

900 (887)

KETEV IF/IAF 2000

DISTANCE (NM)

CAT	VOR-DME				Circling (*)				Timing	FAF / THR 6.1 NM	
	OCA (OCH)	MDA MDH	RVR(1)	RVR(2)	OCA (OCH)	MDA MDH	VIS				
A	607 (594)	610 (600)	1400	1500	657 (644)	660 (650)	1500	90	4 Min 04	140	2 Min 37
B	607 (594)	610 (600)	1500	1500	657 (644)	660 (650)	1600	100	3 Min 40	150	2 Min 26
C	607 (594)	610 (600)	1600	2000	804 (791)	810 (800)	2400	110	3 Min 20	160	2 Min 17
								120	3 Min 03		
								130	2 Min 49		

- Notes :
- (1) With approach lighting
 - (2) Without approach lighting
 - (*) Daytime only. OCH and MDH AAL

AMDT 10/24 : NEW EDITION