



BULLETIN DE MISE A JOUR

Updating bulletin

AMDT 10 / 2024

DATE DE MISE EN VIGUEUR / IMPLEMENTATION DATE **2024-10-03**

CORRECTIF

CHANGEMENTS DANS CET AMENDEMENT		CHANGEMENTS DANS CET AMENDEMENT	
<i>Changes in this amendment</i>		<i>Changes in this amendment</i>	
Sections	<i>Sujets / Subjects</i>	Sections	<i>Sujets / Subjects</i>
AD 2.24			
07 AD2.24.FOOG	PORT GENTIL : Correct version of IAC Charts		

NOTAM INTEGRES					
<i>NOTAM incorporated</i>					
BNI Dakar / <i>NOF Dakar</i>		BNI Brazzaville / <i>NOF Brazzaville</i>		BNI Antananarivo / <i>NOF Antananarivo</i>	
Numéro / <i>Number</i>	Numéro / <i>Number</i>	Numéro / <i>Number</i>	Numéro / <i>Number</i>	Numéro / <i>Number</i>	Numéro / <i>Number</i>

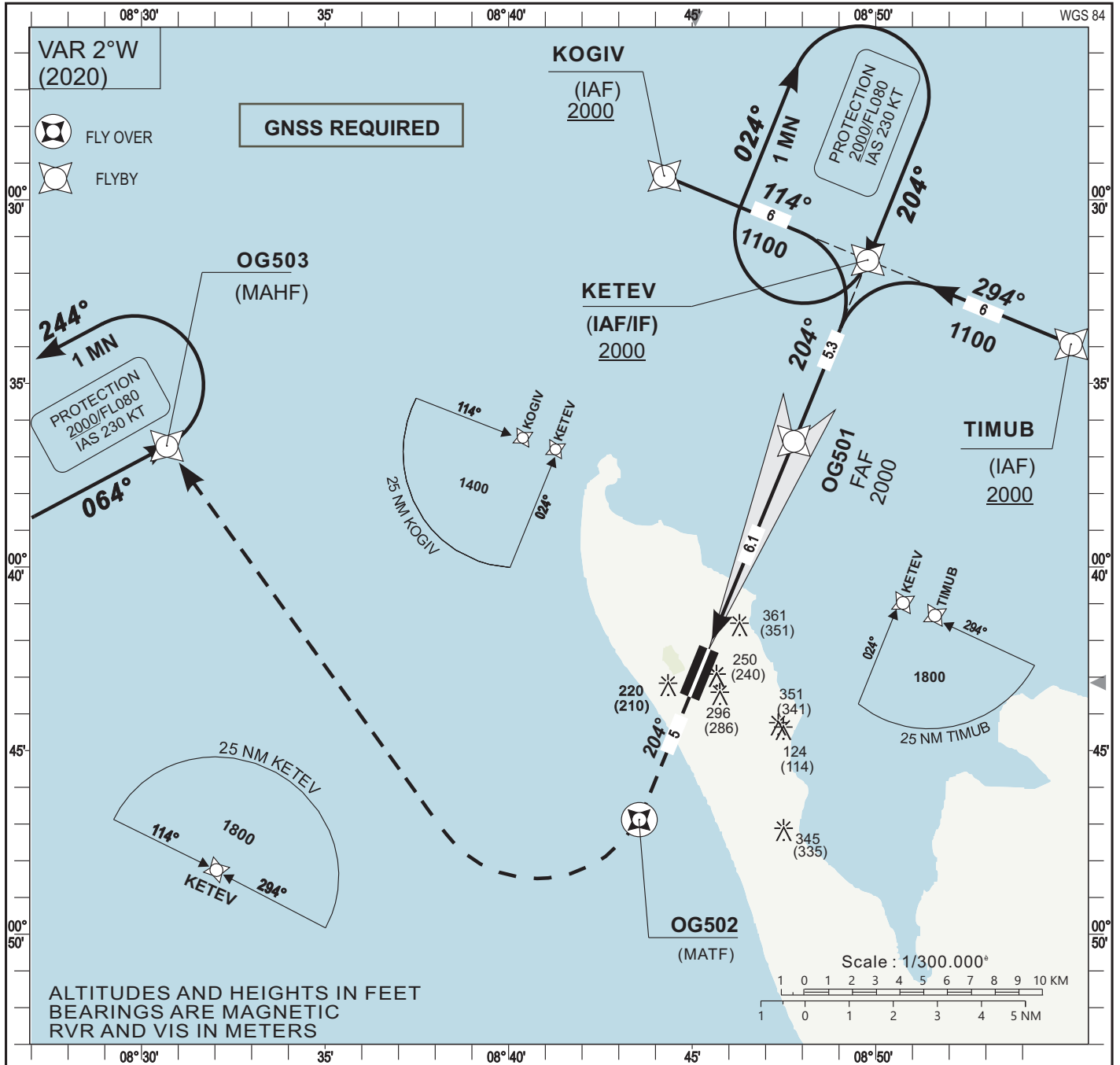
SUP AIP INTEGRES					
<i>AIP SUP incorporated</i>					
BNI Dakar / <i>NOF Dakar</i>		BNI Brazzaville / <i>NOF Brazzaville</i>		BNI Antananarivo / <i>NOF Antananarivo</i>	
Numéro / <i>Number</i>	Numéro / <i>Number</i>	Numéro / <i>Number</i>	Numéro / <i>Number</i>	Numéro / <i>Number</i>	Numéro / <i>Number</i>

PAGE LAISSÉE INTENTIONNELLEMENT VIDE

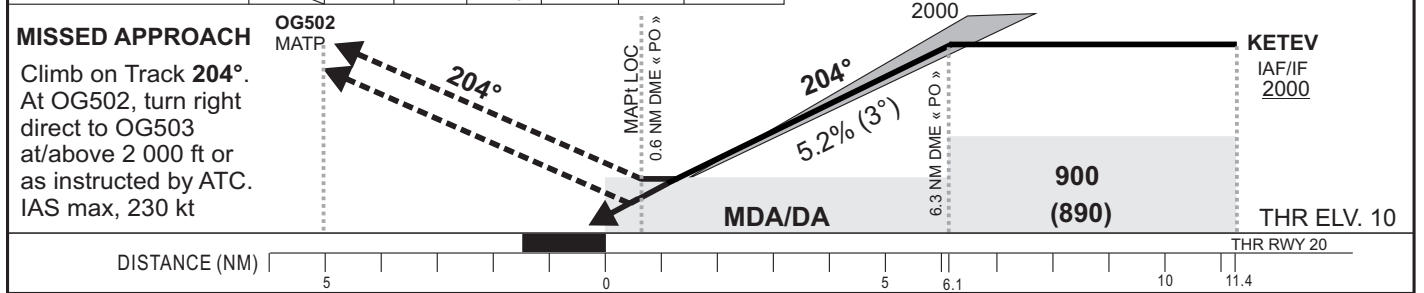
INSTRUMENT
APPROACH
CHART-ICAO

AERODROME ELV: 13 **APP** :Port-Gentil TWR on 118.3
THR RWY 20 ELEV: 10 **TWR** :Port-Gentil TWR on 118.3
HEIGHTS RELATED TO THR RWY 20 ELEV.

Port-Gentil (FOOG)
ILS Y or LOC Y RWY 20
IDENT ILS « PO » FREQ 109.1



Distance to ILS DME « PO »	THR 20	2	3	4	5	6	FAF
Altitude (ft)		630	950	1270	1590	1905	2000



CAT	CAT. I					LOC-DME					CIRCLING (*)				Timing
	OCA (OCH)	DA	DH	RVR(1)	RVR(2)	OCA (OCH)	MDA	MDH	RVR(1)	RVR(2)	OCA (OCH)	MDA	MDH	VIS	
A	227 (217)	230 (220)	700	1000	444 (434)	450 (440)	1200	1500	657 (644)	660 (650)	1500				FAF/THR 6.1 NM KT MIN SEC KT MIN SEC 90 4 04 140 2 37 100 3 40 150 2 26 110 3 20 160 2 17 120 3 03 130 2 49
B	236 (226)	240 (230)	700	1000	444 (434)	450 (440)	1300	1500	657 (644)	660 (650)	1600				
C	246 (236)	250 (240)	700	1000	444 (434)	450 (440)	1400	1800	804 (791)	810 (800)	2400				

Notes: (1) With approach light
(2) Without approach light
(*) Day time only. OCH and MDH AAL

RDH: 15 m

AMDT 10/24 : NEW EDITION

TABULAR DESCRIPTION

ILS Y or LOC Y RWY 20

Serial Number	Path Descriptor	Waypoint Identifier	Fly-Over	Course °M(°T)	Magnetic Variation	Distance (NM)	Turn Direction	Altitude (ft)	Speed limit (Kt)	VPA/TCH (°/m)	Navigation Specification
10	IF	KOGIV	-	-		-	-	+2000	-230	-	RNP APCH
20	TF	KETEV	-	114 (112.3)		6.0	-	+2000	-230	-	RNP APCH
10	IF	TIMUB	-			-	-	+2000	-230	-	RNP APCH
20	TF	KETEV	-	294 (292.3)		6.0		+2000	-230	-	RNP APCH
10	IF	KETEV	-	-		-	-	+2000	-230	-	RNP APCH
20	TF	OG501	-	204 (202.3)		5.3	-	@2000	-	-	N/A
30	TF	RW20	Y	204 (202.3)	+2	6.1	-	@60	-	-3.0/15	N/A
40	CF	OG502	Y	204 (202.3)		5.0	-	-	-230	-	RNP APCH
50	DF	OG503	-	-		-	R	+2000	-230	-	RNP APCH
10	IF	KETEV	-	-		-	-	+2000	-230	-	RNP APCH
20	HM	KETEV	-	204 (202.3)		-	R	+2000	-230	-	RNP APCH
10	IF	OG503	-	-		-	-	+2000	-230	-	RNP APCH
20	HM	OG503	-	64 (061.7)		-	L	+2000	-230	-	RNP APCH

WAYPOINTS LIST

ILS Y or LOC Y RWY 20

Waypoint Identifier	Coordinates	
OG501	00°36'34.004"S	008°47'46.253"E
OG502	00°46'52.810"S	008°43'33.628"E
KOGIV	00°29'20.905"S	008°44'14.522"E
KETEV	00°31'38.421"S	008°49'46.917"E
TIMUB	00°33'55.932"S	008°55'19.316"E
OG503	00°36'42.031"S	008°30'41.543"E
RW20	00°42'13.960"S	008°45'27.470"E

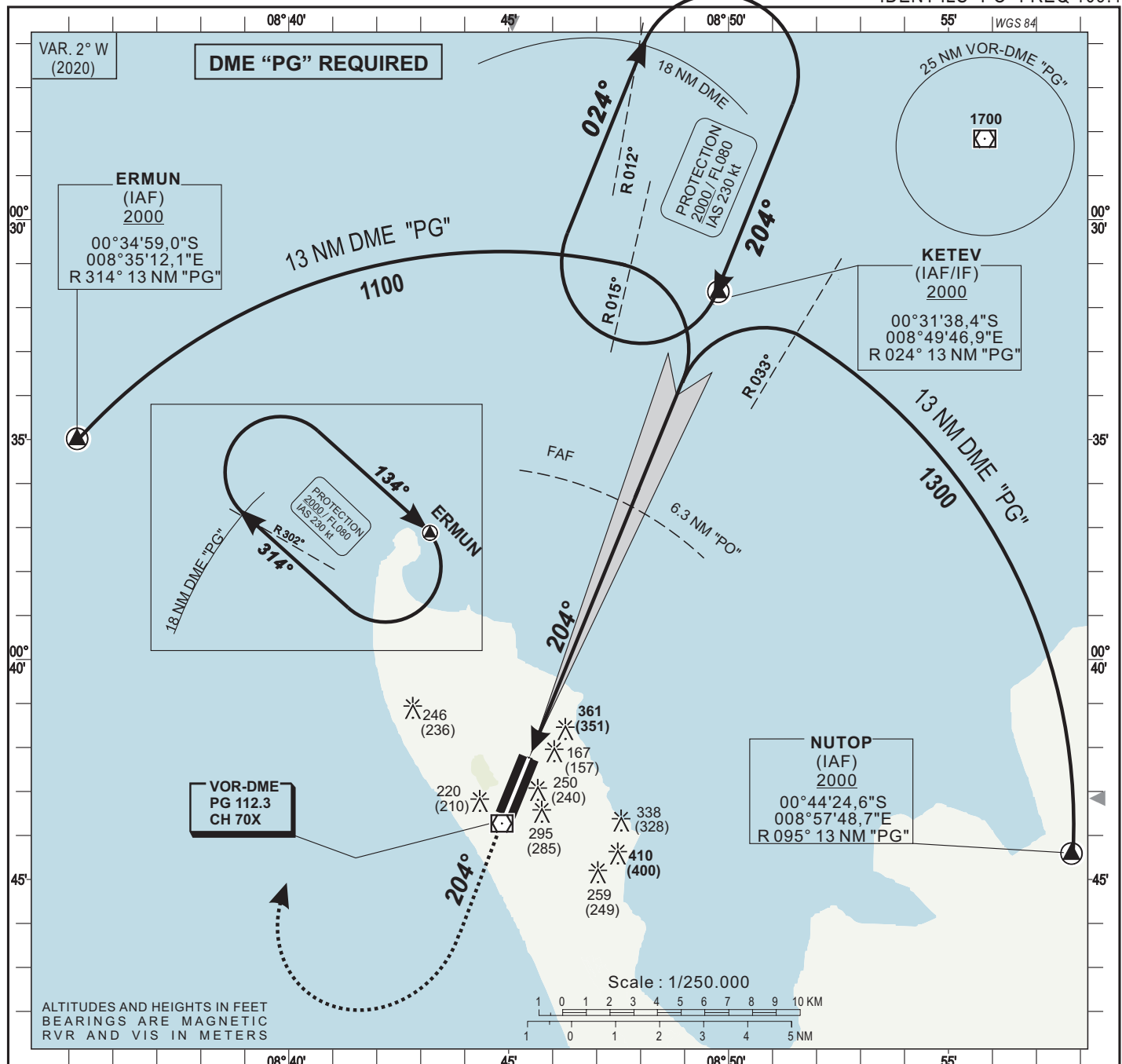
AMDT 10/24 :NEW EDITION

INSTRUMENT
APPROACH
CHART-ICAO

AERODROME ELEV :13
THR RWY 20 ELEV : 10
HEIGHTS RELATED TO THR RWY 20 ELEVATION

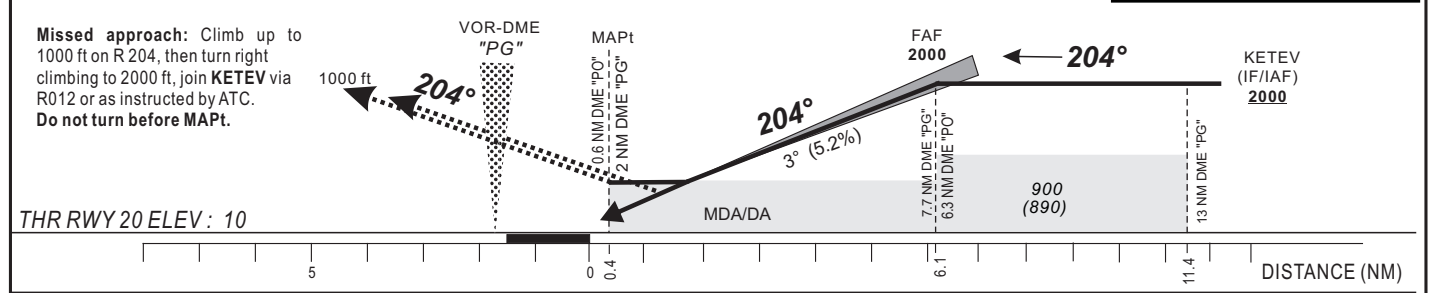
APP : Port Gentil Tower on 118.3
TWR : Port Gentil Tower on 118.3

Port-Gentil (FOOG)
ILS Z or LOC Z RWY 20
IDENT ILS "PO" FREQ 109.1



Distance to DME « PO » (NM)	RWY 20	2	3	4	5	6	FAF
Altitude (ft)		630	950	1270	1590	1905	2000

TRANSITION ALTITUDE : 3 100



CAT	CAT I				LOC-DME				Circling (*)				Timing FAF / THR 6.1 NM
	OCA (OCH)	DA	DH	RVR(1) RVR(2)	OCA (OCH)	MDA MDH	RVR(1) RVR(2)	OCA (OCH)	MDA MDH	VIS			
A	227 (217)	230 (220)		700 1000	444 (434)	450 (440)	1200 1500	657 (644)	660 (650)	1500	90 4 Min 04 140 2 Min 37		
B	236 (226)	240 (230)		700 1000	444 (434)	450 (440)	1300 1500	657 (644)	660 (650)	1600	100 3 Min 40 150 2 Min 26		
C	246 (236)	250 (240)		700 1000	444 (434)	450 (440)	1400 1800	804 (791)	810 (800)	2400	110 3 Min 20 160 2 Min 17		
											120 3 Min 03		
											130 2 Min 49		

Notes : (1) With approach lighting
(2) Without approach lighting
(*) Daytime only. OCH and MDH AAL

RDH: 15 m

NEW EDITION
AMDT 10/24

PAGE LAISSÉE INTENTIONNELLEMENT VIDE

INSTRUMENT
APPROACH
CHART-ICAO

AERODROME ELEV : 13
THR RWY 02 ELEV : 13

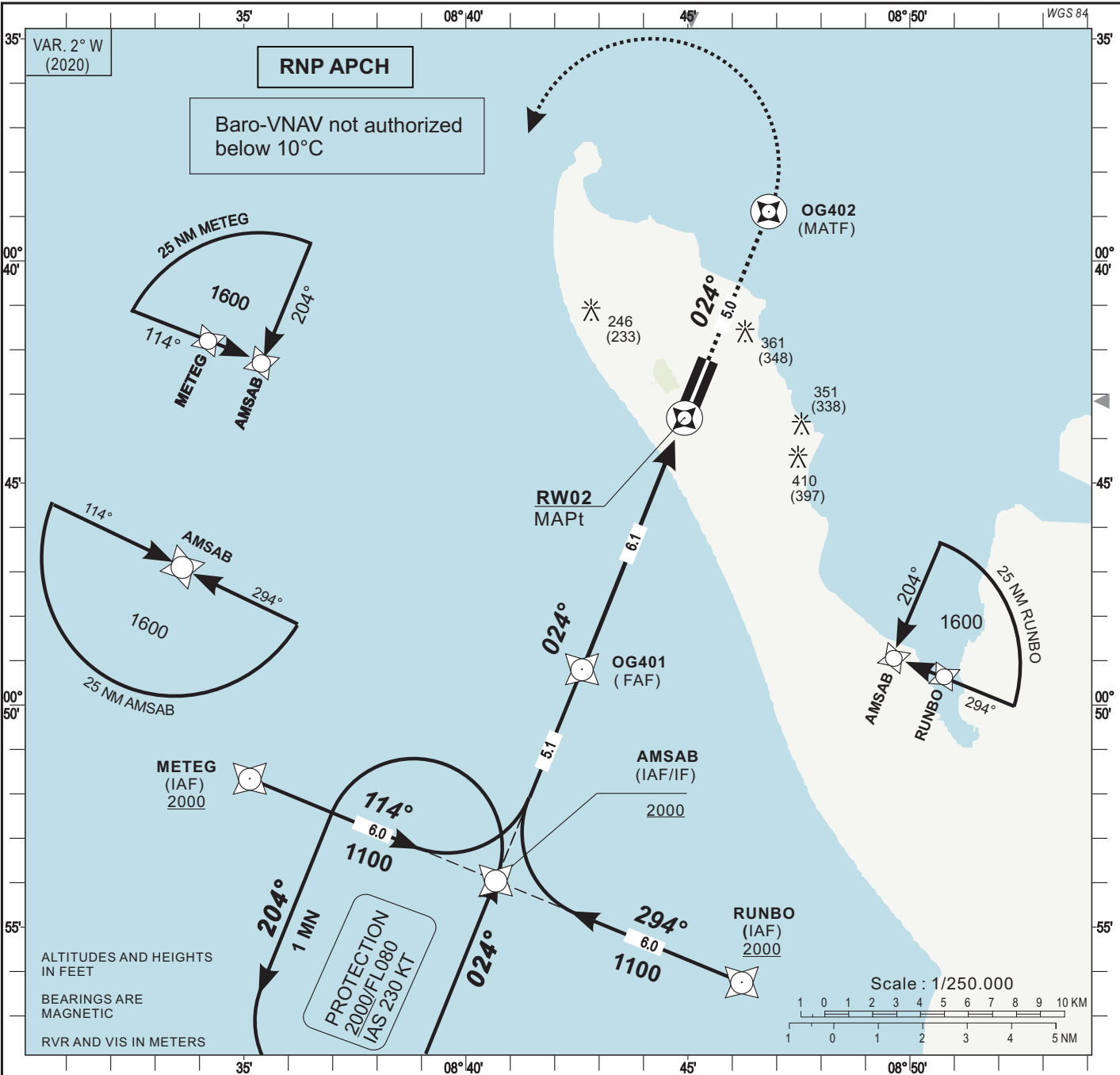
APP : Port-Gentil Tower on 118.3
TWR: Port-Gentil Tower on 118.3

Port-Gentil (FOOG)

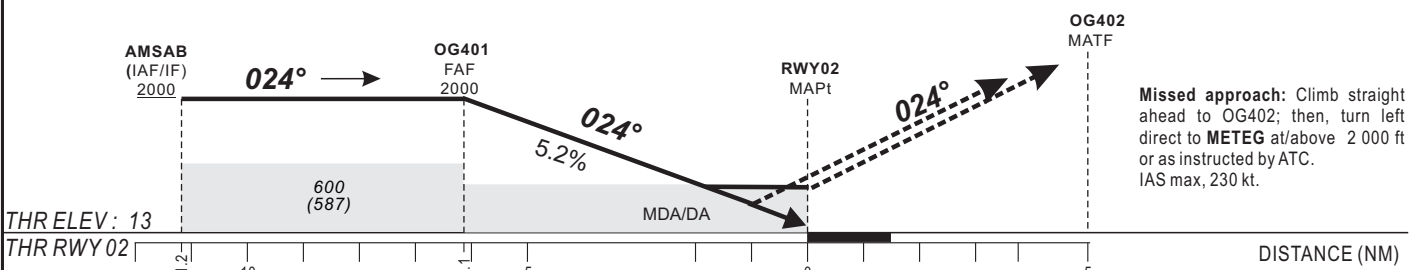
RNP RWY 02

(ACFT CAT A-B-C)

HEIGHTS RELATED TO THRESHOLD 02 ELEVATION



Distance to THR 02 (NM)	FAF	6	5	4	3	2	RWY 02
Altitude (ft)	2000	1975	1655	1335	1020	700	



CAT	LNAV/VNAV			LNAV			Circling (*)					
	OCA (OCH)	DA	DH	RVR	OCA (OCH)	MDA	MDH	RVR	OCA (OCH)	MDA	MDH	VIS
A	323 (310)	330 (310)	1200	1200	440 (427)	440 (430)	1500	1500	657 (644)	660 (650)	1500	
B	336 (323)	340 (330)	1200	1200	440 (427)	440 (430)	1500	1500	657 (644)	660 (650)	1600	
C	354 (341)	360 (350)	1200	1200	440 (427)	440 (430)	1800	1800	804 (791)	810 (800)	2400	
D												

Notes : (*) Daytime only. OCH and MDH AAL

RDH: 15 m

Timing		FAF / THR	
		6.1 NM	
KT	MIN SEC	KT	MIN SEC
90	4 Min 04	140	2 Min 37
100	3 Min 40	150	2 Min 26
110	3 Min 20	160	2 Min 17
120	3 Min 03		
130	2 Min 49		

NEW EDITION
AMDT 10/24

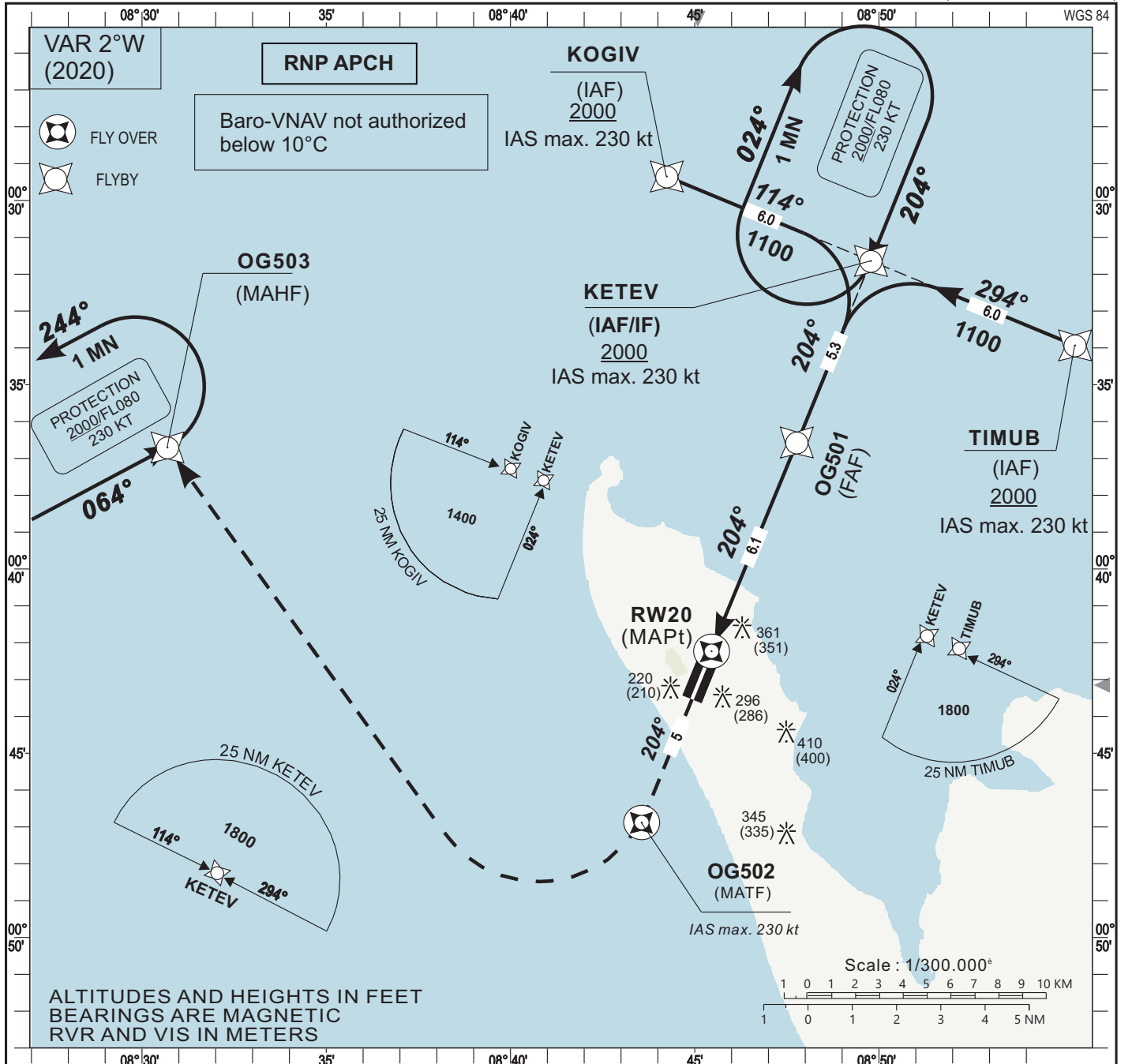
TABULAR DESCRIPTION

RNP RWY 02											
Serial Number	Path Descriptor	Waypoint Identifier	Fly-Over	Course °M(°T)	Magnetic Variation	Distance (NM)	Turn Direction	Altitude (ft)	Speed limit (Kt)	VPA/TCH (°/m)	Navigation Specification
10	IF	METEG	-	-		-	-	+2000	-230	-	RNP APCH
20	TF	AMSAB	-	114(112.3)		6.0	-	+2000	-230	-	RNP APCH
10	IF	RUNBO	-			-	-	+2000	-230	-	RNP APCH
20	TF	AMSAB	-	294(292.3)		6.0		+2000	-230	-	RNP APCH
10	IF	AMSAB	-	-		-	-	+2000	-230	-	RNP APCH
20	TF	OG401	-	24(22.3)		5.1	-	@2000	-	-	RNP APCH
30	TF	RW02	Y	24(22.3)	+2	6.1	-	@63	-	-3.0/15	RNP APCH
40	CF	OG402	Y	24(22.3)		5.0	-	-	-230	-	RNP APCH
50	DF	METEG	-	-		-	L	+2000	-230	-	RNP APCH
10	IF	AMSAB	-	-		-	-	+2000	-230	-	RNP APCH
20	HM	AMSAB	-	24(22.3)		-	L	+2000	-230	-	RNP APCH

WAYPOINTS LIST

RNP RWY 02		
Waypoint Identifier	Coordinates	
OG401	00°49'11.699"S	008°42'36.924"E
OG402	00°38'53.419"S	008°46'49.339"E
METEG	00°51'39.530"S	008°35'08.002"E
AMSAB	00°53'57.059"S	008°40'40.418"E
RUNBO	00°56'14.579"S	008°46'12.840"E
RW02	00°43'32.270"S	008°44'55.500"E

AMDT 10/24 : NEW EDITION

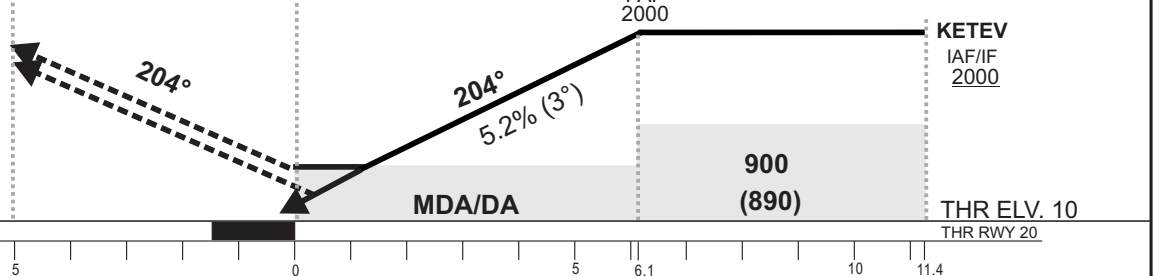


Distance to RWY20 (NM)	RW20	2	3	4	5	6	FAF
Altitude (ft)		700	1015	1330	1650	1970	2000

TRANSITION ALTITUDE : 3100

MISSED APPROACH

Climb on Track 204°. At OG502, turn right direct to OG503 at/above 2 000 ft or as instructed by ATC. IAS max, 230 kt



DISTANCE (NM)	5	0	5	6.1	10	11.4
---------------	---	---	---	-----	----	------

CAT	LNAV/VNAV				LNAV					CIRCLING (*)				Timing FAF/THR 6.1 NM
	OCA (OCH)	DA	DH	RVR	OCA (OCH)	MDA	MDH	RVR(1)	RVR(2)	OCA (OCH)	MDA	MDH	VIS	
A	478 (468)	480 (470)	1200		607 (597)	610 (600)	1400	1500		657 (644)	660 (650)	1500		
B	490 (480)	490 (480)	1200		607 (597)	610 (600)	1500	1500		657 (644)	660 (650)	1600		
C	497 (487)	500 (490)	1200		607 (597)	610 (600)	1600	2000		804 (791)	810 (800)	2400		

Notes: (1) With approach light
(2) Without approach light
(*) Day time only. OCH and MDH AAL.

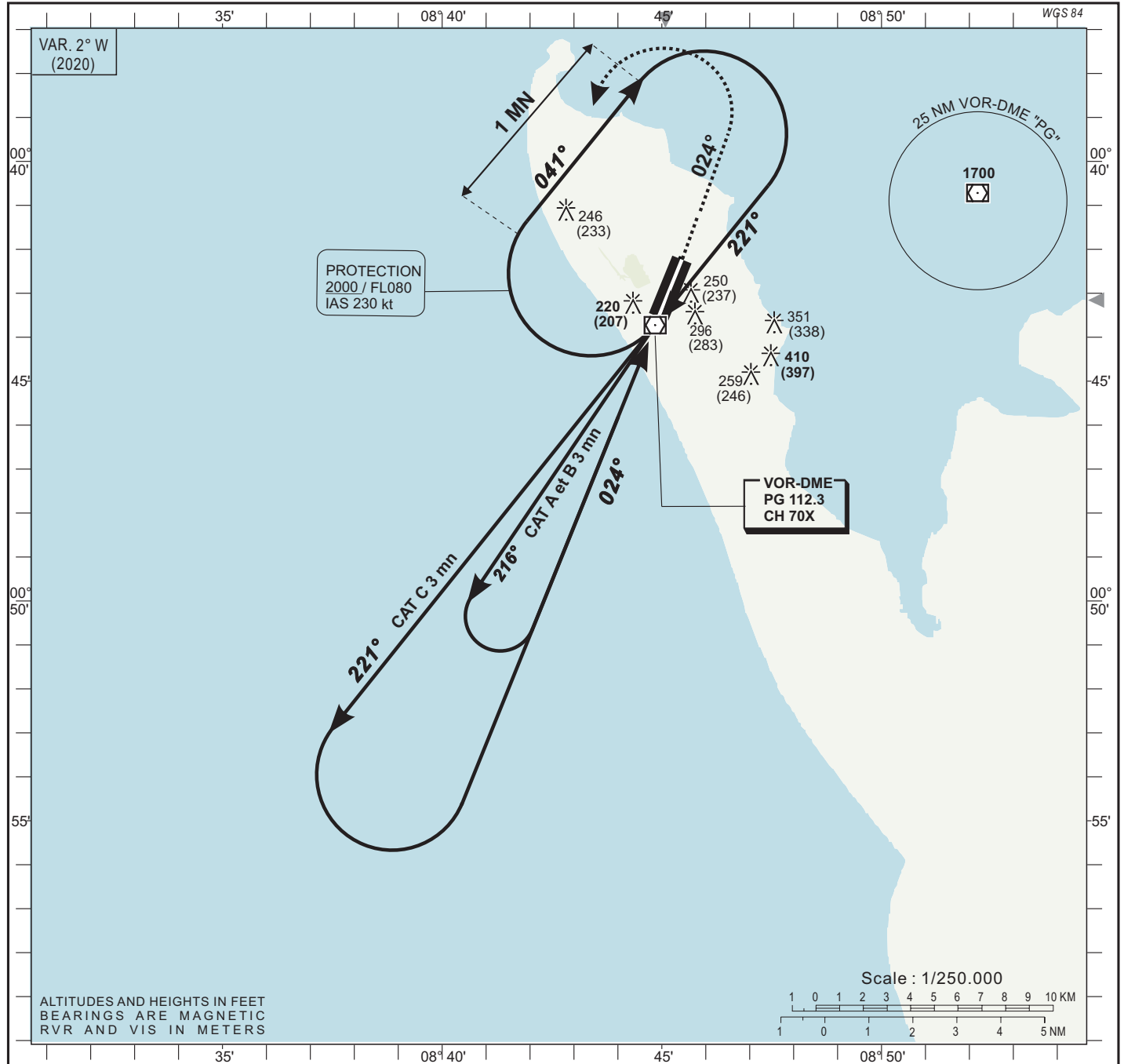
RDH: 15 m

NEW EDITION
AMDT 10/24

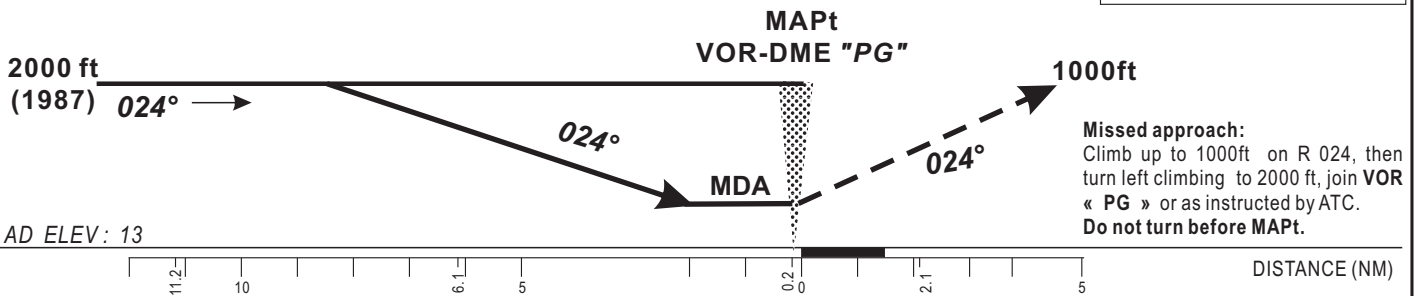
TABULAR DESCRIPTION											
RNP RWY 20											
Serial Number	Path Descriptor	Waypoint Identifier	Fly-Over	Course °M(°T)	Magnetic Variation	Distance (NM)	Turn Direction	Altitude (ft)	Speed limit (Kt)	VPA/TCH (°/m)	Navigation Specification
10	IF	KOGIV	-	-		-	-	+2000	-230	-	RNP APCH
20	TF	KETEV	-	114 (112.3)		6.0	-	+2000	-230	-	RNP APCH
10	IF	TIMUB	-	-		-	-	+2000	-230	-	RNP APCH
20	TF	KETEV	-	294 (292.3)		6.0		+2000	-230	-	RNP APCH
10	IF	KETEV	-	-		-	-	+2000	-230	-	RNP APCH
20	TF	OG501	-	204 (202.3)		5.3	-	@2000	-	-	RNP APCH
30	TF	RW20	Y	204 (202.3)	+2	6.1	-	@60	-	-3.0/15	RNP APCH
40	CF	OG502	Y	204 (202.3)		5.0	-	-	-230	-	RNP APCH
50	DF	OG503	-	-		-	R	+2000	-230	-	RNP APCH
10	IF	KETEV	-	-		-	-	+2000	-230	-	RNP APCH
20	HM	KETEV	-	204 (202.3)		-	R	+2000	-230	-	RNP APCH
10	IF	OG503	-	-		-	-	+2000	-230	-	RNP APCH
20	HM	OG503	-	64 (061.7)		-	L	+2000	-230	-	RNP APCH

WAYPOINTS LIST		
RNP RWY 20		
Waypoint Identifier	Coordinates	
OG501	00°36'34.004"S	008°47'46.253"E
OG502	00°46'52.810"S	008°43'33.628"E
KOGIV	00°29'20.905"S	008°44'14.522"E
KETEV	00°31'38.421"S	008°49'46.917"E
TIMUB	00°33'55.932"S	008°55'19.316"E
OG503	00°36'42.031"S	008°30'41.543"E
RW20	00°42'13.960"S	008°45'27.470"E

AMDT 10/24 : NEW EDITION



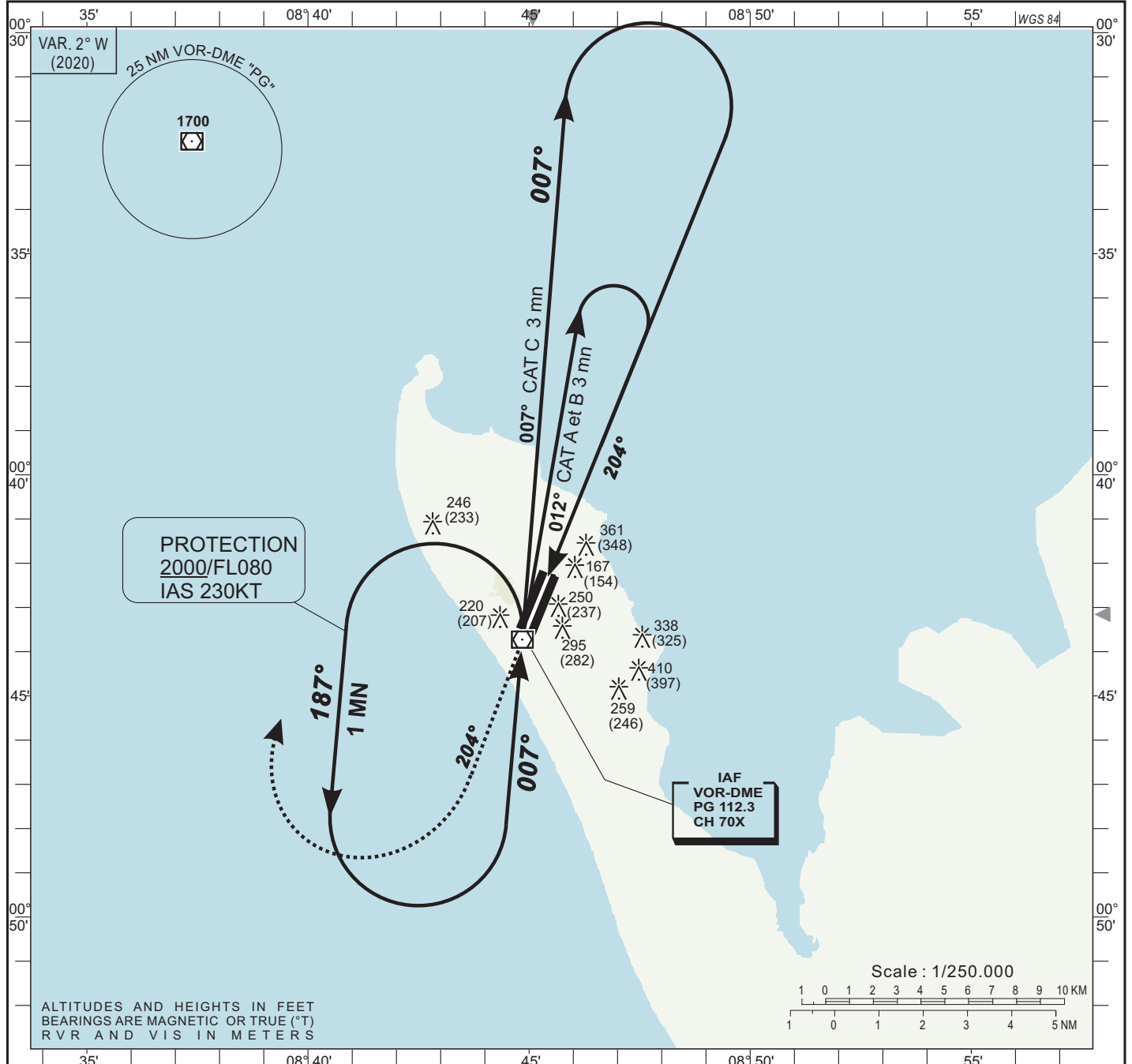
TRANSITION ALTITUDE : 3 100



CAT	VOR				Circling (*)				Timing		
	OCA (OCH)	MDA MDH	RVR	OCA (OCH)	MDA MDH	VIS	KT	MIN SEC		KT	MIN SEC
A	444 (431)	450 (440)	1500	657 (644)	660 (650)	1500					
B	444 (431)	450 (440)	1500	657 (644)	660 (650)	1600					
C	444 (431)	450 (440)	1800	804 (791)	810 (800)	2400					

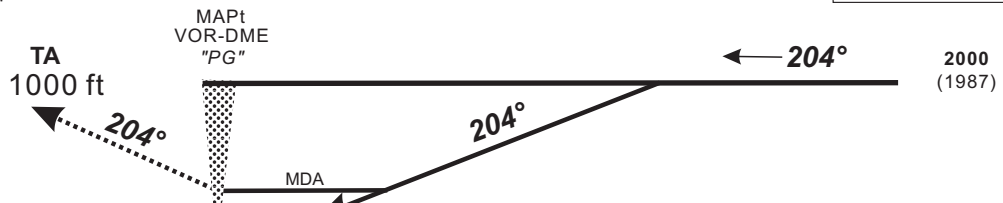
Notes : (*) Daytime only. OCH and MDH AAL

AMDT 10/24 : NEW EDITION



Missed approach: Climb up to 1000 ft on R 204, then turn right climbing to 2000 ft, join VOR "PG" or as instructed by ATC.
Do not turn before MAPt.

TRANSITION ALTITUDE : 3 100



AERODROME ELEV : 13

THR RWY 20 | 5 0 5 10 | DISTANCE (NM)

NEW EDITION

AMDT 10/24:

CAT	VOR				Circling (*)				VIS	Timing FAF / THR
	OCA (OCH)	MDA	MDH	RVR(1)	RVR(2)	OCA (OCH)	MDA	MDH		
A	657 (644)	660 (650)		1500	1500	657 (644)	660 (650)		1500	
B	657 (644)	660 (650)		1500	1500	657 (644)	660 (650)		1600	
C	657 (644)	660 (650)		1800	2000	804 (791)	810 (800)		2400	

Notes : (1) With approach lighting
(2) Without approach lighting
(*) Daytime only. OCH and MDH AAL

KT	MIN	SEC	KT	MIN	SEC
90			140		
100			150		
110			160		
120			170		
130			180		

**INSTRUMENT
APPROACH
CHART-ICAO**

AERODROME ELEV : 13
THR RWY 02 ELEV : 13

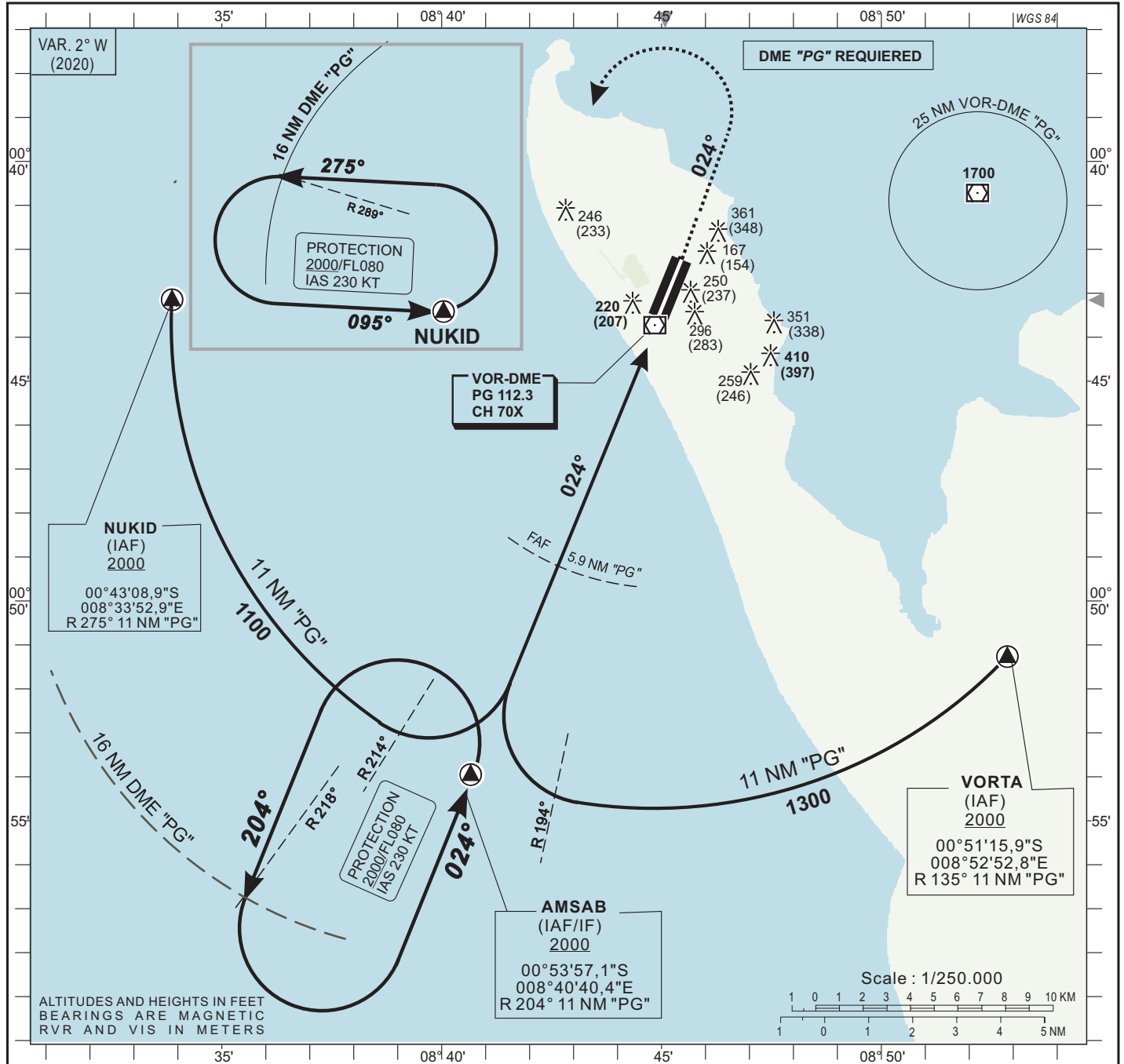
APP : Port-Gentil Tower on 118.3
TWR: Port-Gentil Tower on 118.3

Port-Gentil (FOOG)

VOR Z RWY 02

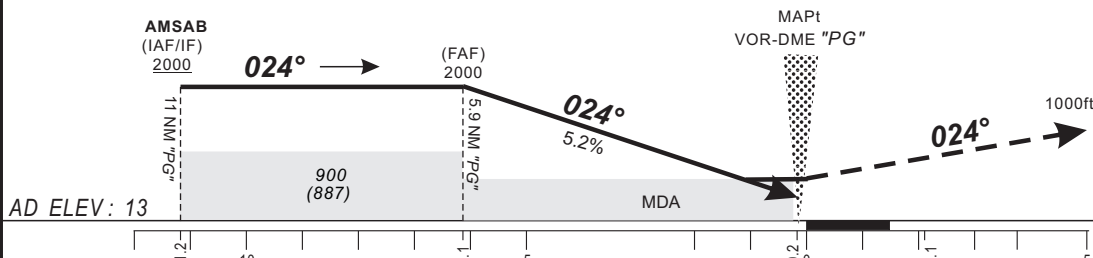
HEIGHTS RELATED TO AERODROME ELEVATION

IDENT VOR « PG » FREQ 112.3



Distance to DME « PG » (NM)	FAF	5	4	3	2	1	RWY02
Altitude (ft)	2 000	1720	1400	1080	765	445	

TRANSITION ALTITUDE : 3 100



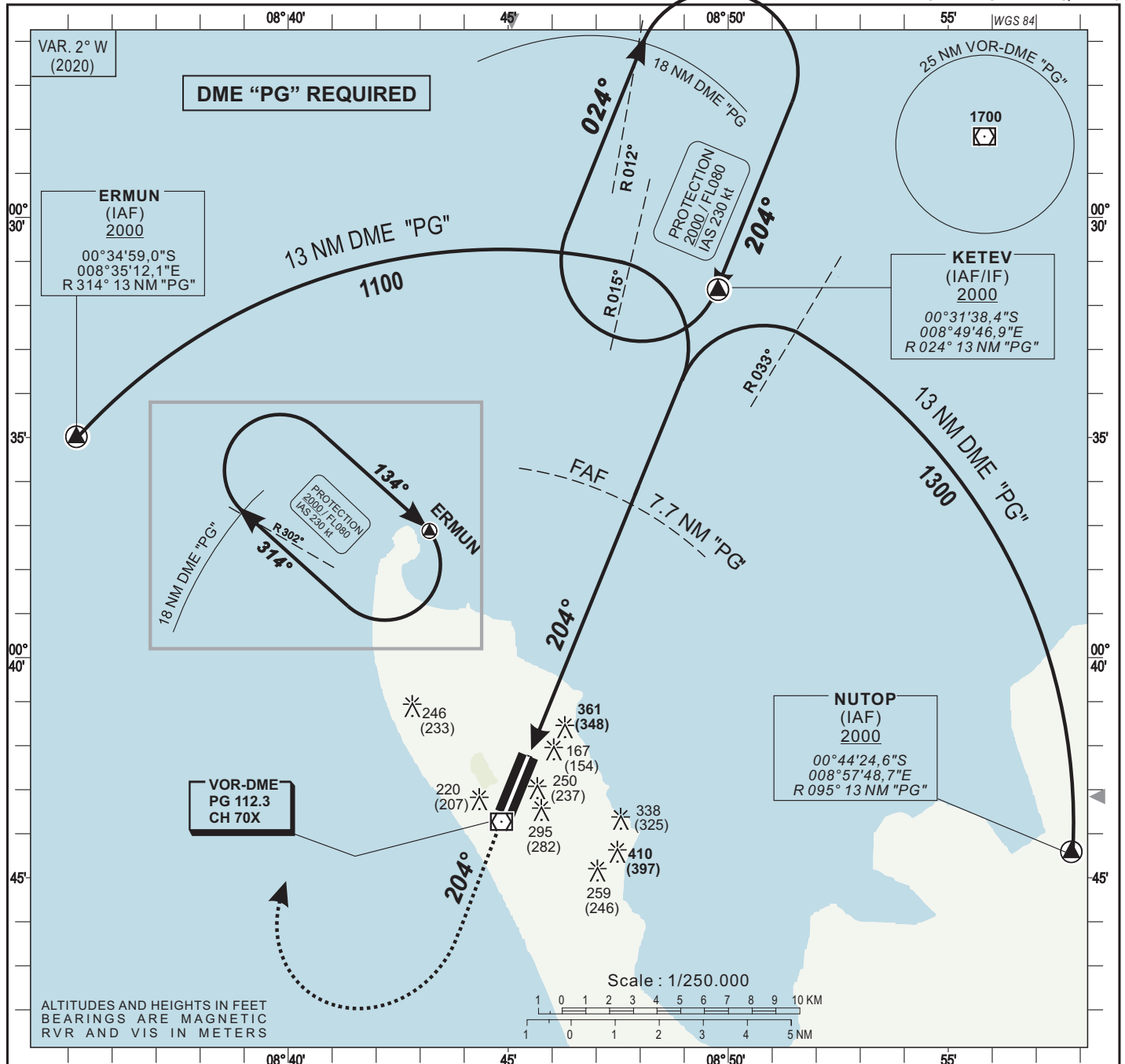
Missed approach: Climb up to 1000ft on R 024, then turn left climbing to 2000 ft, join AMSAB via R218 or as instructed by ATC.
Do not turn before MAPt.

CAT	VOR-DME				Circling (*)				VIS
	OCA (OCH)	MDA	MDH	RVR	OCA (OCH)	MDA	MDH	VIS	
A	405 (392)	410 (400)	1500	657 (644)	660 (650)	660 (650)	1500		
B	405 (392)	410 (400)	1500	657 (644)	660 (650)	660 (650)	1600		
C	405 (392)	410 (400)	1800	804 (791)	810 (800)	810 (800)	2400		
D									

KT	FAF / THR 6.1 NM		KT	THR	
	MIN	SEC		MIN	SEC
90	4	04	140	2	37
100	3	40	150	2	26
110	3	20	160	2	17
120	3	03			
130	2	49			

Notes : (*) Daytime only. OCH and MDH AAL

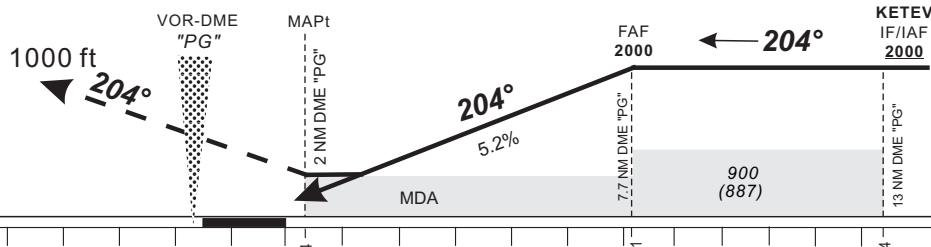
AMDT 10/24 : NEW EDITION



Distance to DME « PG » (NM)	RWY 20	4	5	6	7	FAF
Altitude (ft)		830	1145	1465	1780	2000

TRANSITION ALTITUDE : 3 100

Missed approach: Climb up to 1000 ft on R 204, then turn right climbing to 2000 ft, join KETE V via R012 or as instructed by ATC.
Do not turn before MAPt.



AERODROME ELEV : 13

DISTANCE (NM)

CAT	VOR-DME				Circling (*)				Timing	FAF / THR 6.1 NM	
	OCA (OCH)	MDA MDH	RVR(1)	RVR(2)	OCA (OCH)	MDA MDH	VIS				
A	607 (594)	610 (600)	1400	1500	657 (644)	660 (650)	1500	90	4 Min 04	140	2 Min 37
B	607 (594)	610 (600)	1500	1500	657 (644)	660 (650)	1600	100	3 Min 40	150	2 Min 26
C	607 (594)	610 (600)	1600	2000	804 (791)	810 (800)	2400	110	3 Min 20	160	2 Min 17
								120	3 Min 03		
								130	2 Min 49		

Notes :
(1) With approach lighting
(2) Without approach lighting
(*) Daytime only. OCH and MDH AAL

AMDT 10/24 : NEW EDITION